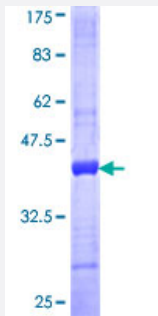


# FBLN2 (Human) Recombinant Protein (Q01)

Catalog # H00002199-Q01

Size 25 ug, 10 ug

## Applications



## Specification

<b>Product Description</b>	Human FBLN2 partial ORF ( NP_001989, 1076 a.a. - 1184 a.a.) recombinant protein with GST-tag at N-terminal.
<b>Sequence</b>	FLEQNSPARITHYQLNFQTGLLVP AHIFRIGPAPAFTGDTIALNIIKGNEEGYFGTRRLNAYTGVVYL QRAVLEPRDFALDVEMKLWRQGSVTTF LAKMHIFFTFAL
<b>Host</b>	Wheat Germ (in vitro)
<b>Theoretical MW (kDa)</b>	37.73
<b>Interspecies Antigen Sequence</b>	Mouse (92); Rat (91)
<b>Preparation Method</b>	<a href="#">in vitro wheat germ expression system</a>
<b>Purification</b>	Glutathione Sepharose 4 Fast Flow
<b>Quality Control Testing</b>	12.5% SDS-PAGE Stained with Coomassie Blue.
<b>Storage Buffer</b>	50 mM Tris-HCl, 10 mM reduced Glutathione, pH=8.0 in the elution buffer.
<b>Storage Instruction</b>	Store at -80°C. Aliquot to avoid repeated freezing and thawing.
<b>Note</b>	Best use within three months from the date of receipt of this protein.

## Applications

- Enzyme-linked Immunoabsorbent Assay
- Western Blot (Recombinant protein)
- Antibody Production
- Protein Array

## Gene Info — FBLN2

Entrez GeneID	<a href="#">2199</a>
---------------	----------------------

GeneBank Accession#	<a href="#">NM_001998</a>
---------------------	---------------------------

Protein Accession#	<a href="#">NP_001989</a>
--------------------	---------------------------

Gene Name	FBLN2
-----------	-------

Gene Alias	-
------------	---

Gene Description	fibulin 2
------------------	-----------

Omim ID	<a href="#">135821</a>
---------	------------------------

Gene Ontology	<a href="#">Hyperlink</a>
---------------	---------------------------

Gene Summary	This gene encodes an extracellular matrix protein, which belongs to the fibulin family. This protein binds various extracellular ligands and calcium. It may play a role during organ development, in particular, during the differentiation of heart, skeletal and neuronal structures. Alternatively spliced transcript variants encoding different isoforms have been identified. [provided by RefSeq]
--------------	---

Other Designations	-
--------------------	---