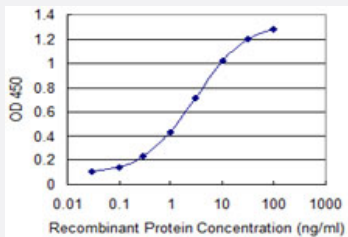


FBLN2 monoclonal antibody (M05), clone 2A2

Catalog # H00002199-M05

Size 100 ug

Applications



Sandwich ELISA (Recombinant protein)

Detection limit for recombinant GST tagged FBLN2 is 0.03 ng/ml as a capture antibody.

Specification

| | |
|--------------------------------------|--|
| Product Description | Mouse monoclonal antibody raised against a partial recombinant FBLN2. |
| Immunogen | FBLN2 (NP_001989, 1076 a.a. ~ 1184 a.a) partial recombinant protein with GST tag. MW of the GST tag alone is 26 KDa. |
| Sequence | FLECQNSPARITHYQLNFQTGLLVPAHIFRIGPAPAFGTGDTIALNIIKGNEEGYFGTRRLNAYTGVVYL QRAVLEPRDFALDVEMKLWRQGSVTTFLAKMHIFFTTFAL |
| Host | Mouse |
| Reactivity | Human |
| Interspecies Antigen Sequence | Mouse (92); Rat (91) |
| Isotype | IgG2a Kappa |
| Quality Control Testing | Antibody Reactive Against Recombinant Protein. |
| Storage Buffer | In 1x PBS, pH 7.4 |
| Storage Instruction | Store at -20°C or lower. Aliquot to avoid repeated freezing and thawing. |

Applications

- Sandwich ELISA (Recombinant protein)

Detection limit for recombinant GST tagged FBLN2 is 0.03 ng/ml as a capture antibody.

[Protocol Download](#)

- ELISA

Gene Info — FBLN2

| | |
|---------------|----------------------|
| Entrez GeneID | 2199 |
|---------------|----------------------|

| | |
|---------------------|---------------------------|
| GeneBank Accession# | NM_001998 |
|---------------------|---------------------------|

| | |
|--------------------|---------------------------|
| Protein Accession# | NP_001989 |
|--------------------|---------------------------|

| | |
|-----------|-------|
| Gene Name | FBLN2 |
|-----------|-------|

| | |
|------------|---|
| Gene Alias | - |
|------------|---|

| | |
|------------------|-----------|
| Gene Description | fibulin 2 |
|------------------|-----------|

| | |
|---------|------------------------|
| Omim ID | 135821 |
|---------|------------------------|

| | |
|---------------|---------------------------|
| Gene Ontology | Hyperlink |
|---------------|---------------------------|

| | |
|--------------|---|
| Gene Summary | This gene encodes an extracellular matrix protein, which belongs to the fibulin family. This protein binds various extracellular ligands and calcium. It may play a role during organ development, in particular, during the differentiation of heart, skeletal and neuronal structures. Alternatively spliced transcript variants encoding different isoforms have been identified. [provided by RefSeq] |
|--------------|---|

| | |
|--------------------|---|
| Other Designations | - |
|--------------------|---|