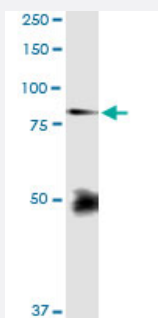


FBLN1 (Human) IP-WB Antibody Pair

Catalog # H00002192-PW2

Size 1 Set

Applications



Immunoprecipitation of FBLN1 transfected lysate using rabbit polyclonal anti-FBLN1 and Protein A Magnetic Bead ([U0007](#)), and immunoblotted with mouse purified polyclonal anti-FBLN1.

Specification

Product Description	This IP-WB antibody pair set comes with one antibody for immunoprecipitation and another to detect the precipitated protein in western blot.
Reactivity	Human
Quality Control Testing	Immunoprecipitation-Western Blot (IP-WB) Immunoprecipitation of FBLN1 transfected lysate using rabbit polyclonal anti-FBLN1 and Protein A Magnetic Bead (U0007), and immunoblotted with mouse purified polyclonal anti-FBLN1.
Supplied Product	Antibody pair set content: 1. Antibody pair for IP: rabbit polyclonal anti-FBLN1 (300 ul) 2. Antibody pair for WB: mouse purified polyclonal anti-FBLN1 (50 ug)
Storage Instruction	Store reagents of the antibody pair set at -20°C or lower. Please aliquot to avoid repeated freeze thaw cycle. Reagents should be returned to -20°C storage immediately after use.

Applications

- Immunoprecipitation-Western Blot

[Protocol Download](#)

Gene Info — FBLN1

Entrez GeneID [2192](#)**Gene Name** FBLN1**Gene Alias** FBLN**Gene Description** fibulin 1**Omim ID** [135820 608180](#)**Gene Ontology** [Hyperlink](#)

Gene Summary Fibulin 1 is a secreted glycoprotein that becomes incorporated into a fibrillar extracellular matrix. Calcium-binding is apparently required to mediate its binding to laminin and nidogen. It mediates platelet adhesion via binding fibrinogen. Four splice variants which differ in the 3' end have been identified. Each variant encodes a different isoform, but no functional distinctions have been identified among the four variants. [provided by RefSeq]

Other Designations OTTHUMP00000028589

Disease

- [Abortion](#)
- [Heart Defects](#)
- [Infertility](#)
- [Tobacco Use Disorder](#)