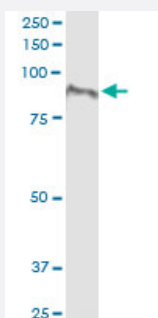


# FAP (Human) IP-WB Antibody Pair

Catalog # H00002191-PW2

Size 1 Set

## Applications



Immunoprecipitation of FAP transfected lysate using rabbit polyclonal anti-FAP and Protein A Magnetic Bead ([U0007](#)), and immunoblotted with mouse purified polyclonal anti-FAP.

## Specification

<b>Product Description</b>	This IP-WB antibody pair set comes with one antibody for immunoprecipitation and another to detect the precipitated protein in western blot.
<b>Reactivity</b>	Human
<b>Quality Control Testing</b>	Immunoprecipitation-Western Blot (IP-WB) Immunoprecipitation of FAP transfected lysate using rabbit polyclonal anti-FAP and Protein A Magnetic Bead ( <a href="#">U0007</a> ), and immunoblotted with mouse purified polyclonal anti-FAP.
<b>Supplied Product</b>	Antibody pair set content: 1. Antibody pair for IP: rabbit polyclonal anti-FAP (300 ul) 2. Antibody pair for WB: mouse purified polyclonal anti-FAP (50 ug)
<b>Storage Instruction</b>	Store reagents of the antibody pair set at -20°C or lower. Please aliquot to avoid repeated freeze thaw cycle. Reagents should be returned to -20°C storage immediately after use.

## Applications

- Immunoprecipitation-Western Blot

[Protocol Download](#)

## Gene Info — FAP

Entrez GeneID	<a href="#">2191</a>
Gene Name	FAP
Gene Alias	DKFZp686G13158, DPPIV, FAPA
Gene Description	fibroblast activation protein, alpha
Omim ID	<a href="#">600403</a>
Gene Ontology	<a href="#">Hyperlink</a>
Gene Summary	<p>The protein encoded by this gene is a homodimeric integral membrane gelatinase belonging to the serine protease family. It is selectively expressed in reactive stromal fibroblasts of epithelial cancers, granulation tissue of healing wounds, and malignant cells of bone and soft tissue sarcomas. This protein is thought to be involved in the control of fibroblast growth or epithelial-mesenchymal interactions during development, tissue repair, and epithelial carcinogenesis. [provided by RefSeq]</p>
Other Designations	fibroblast activation protein, alpha subunit integral membrane serine protease seprase

## Disease

- [Tobacco Use Disorder](#)