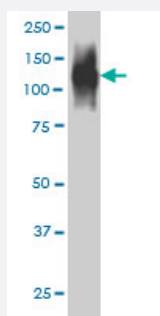


# FAP monoclonal antibody (M01), clone 1E5

Catalog # H00002191-M01

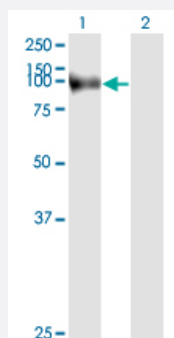
Size 100 ug

## Applications



### Western Blot (Cell lysate)

FAP monoclonal antibody (M01), clone 1E5 Western Blot analysis of FAP expression in HepG2 ( Cat # L019V1 ).

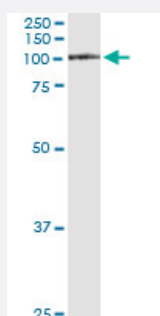


### Western Blot (Transfected lysate)

Western Blot analysis of FAP expression in transfected 293T cell line by FAP monoclonal antibody (M01), clone 1E5.

Lane 1: FAP transfected lysate(87.7 KDa).

Lane 2: Non-transfected lysate.

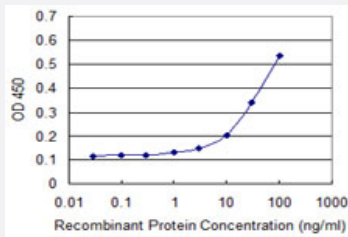


### Immunoprecipitation

Immunoprecipitation of FAP transfected lysate using anti-FAP monoclonal antibody and Protein A Magnetic Bead, and immunoblotted with FAP MaxPab rabbit polyclonal antibody.

## Sandwich ELISA (Recombinant protein)

Detection limit for recombinant GST tagged FAP is approximately 0.1ng/ml as a capture antibody.



Western Blot detection against Immunogen (36.74 KDa) .

## Specification

<b>Product Description</b>	Mouse monoclonal antibody raised against a partial recombinant FAP.
<b>Immunogen</b>	FAP (AAH26250, 525 a.a. ~ 624 a.a) partial recombinant protein with GST tag. MW of the GST tag alone is 26 KDa.
<b>Sequence</b>	PPQFDRSKKYPLLIQVYGGPCSQSVRSVFVAVNWISYLASKEGMVIALVDGRGTAFQGDKLLYAVY RKLGVYEVEDQITAVRKFIEMGFIDEKRIAWGWS
<b>Host</b>	Mouse
<b>Reactivity</b>	Human
<b>Isotype</b>	IgG2a Kappa
<b>Quality Control Testing</b>	Antibody Reactive Against Recombinant Protein. Western Blot detection against Immunogen (36.74 KDa) .
<b>Storage Buffer</b>	In 1x PBS, pH 7.4
<b>Storage Instruction</b>	Store at -20°C or lower. Aliquot to avoid repeated freezing and thawing.

## Applications

- Western Blot (Cell lysate)

FAP monoclonal antibody (M01), clone 1E5 Western Blot analysis of FAP expression in HepG2 ( Cat # L019V1 ).

[Protocol Download](#)

- Western Blot (Transfected lysate)

Western Blot analysis of FAP expression in transfected 293T cell line by FAP monoclonal antibody (M01), clone 1E5.

Lane 1: FAP transfected lysate(87.7 KDa).

Lane 2: Non-transfected lysate.

[Protocol Download](#)

- Western Blot (Recombinant protein)

[Protocol Download](#)

- Immunoprecipitation

Immunoprecipitation of FAP transfected lysate using anti-FAP monoclonal antibody and Protein A Magnetic Bead, and immunoblotted with FAP MaxPab rabbit polyclonal antibody.

[Protocol Download](#)

- Sandwich ELISA (Recombinant protein)

Detection limit for recombinant GST tagged FAP is approximately 0.1ng/ml as a capture antibody.

[Protocol Download](#)

- ELISA

## Gene Info — FAP

Entrez GeneID [2191](#)

GeneBank Accession# [BC026250](#)

Protein Accession# [AAH26250](#)

Gene Name FAP

Gene Alias DKFZp686G13158, DPPIV, FAPA

Gene Description fibroblast activation protein, alpha

Omim ID [600403](#)

## Gene Ontology

[Hyperlink](#)

## Gene Summary

The protein encoded by this gene is a homodimeric integral membrane gelatinase belonging to the serine protease family. It is selectively expressed in reactive stromal fibroblasts of epithelial cancers, granulation tissue of healing wounds, and malignant cells of bone and soft tissue sarcomas. This protein is thought to be involved in the control of fibroblast growth or epithelial-mesenchymal interactions during development, tissue repair, and epithelial carcinogenesis. [provided by RefSeq]

## Other Designations

fibroblast activation protein, alpha subunit|integral membrane serine protease|seprase

## Publication Reference

- [Fibroblast activation protein targeted near infrared photoimmunotherapy \(NIR PIT\) overcomes therapeutic resistance in human esophageal cancer.](#)

Ryoichi Katsube, Kazuhiro Noma, Toshiaki Ohara, Noriyuki Nishiwaki, Teruki Kobayashi, Satoshi Komoto, Hiroaki Sato, Hajime Kashima, Takuya Kato, Satoru Kikuchi, Hiroshi Tazawa, Shunsuke Kagawa, Yasuhiro Shirakawa, Hisataka Kobayashi, Toshiyoshi Fujiwara.

Scientific Reports 2021 Jan; 11(1):1693.

Application: WB-Ce, Human, Human cancer-associated fibroblasts

- [Cancer-associated fibroblasts \(CAFs\) promote the lymph node metastasis of esophageal squamous cell carcinoma.](#)

Kashima H, Noma K, Ohara T, Kato T, Katsura Y, Komoto S, Sato H, Katsube R, Ninomiya T, Tazawa H, Shirakawa Y, Fujiwara T.

International Journal of Cancer 2019 Feb; 144(4):828.

Application: WB, Human, FEF3 cells

- [Fibroblast Activation Protein \(FAP\) Is Essential for the Migration of Bone Marrow Mesenchymal Stem Cells through RhoA Activation.](#)

Chung KM, Hsu SC, Chu YR, Lin MY, Jiaang WT, Chen RH, Chen X.

PLoS One 2014 Feb; 9(2):e88772.

Application: WB-Ce, WB-Tr, Human, BM-MSCs

- [Extracellular Hsp90 mediates an NF-κB dependent inflammatory stromal program: Implications for the prostate tumor microenvironment.](#)

Bohonowych J, Hance M, Nolan K, Defee M, Parsons C, Isaacs J.

The Prostate 2014 Apr; 74(4):395.

Application: WB-Ce, Human, Normal prostatic fibroblasts

- [Differential impact of TGF-beta and EGF on fibroblast differentiation and invasion reciprocally promotes colon cancer cell invasion.](#)

Denys H, Derycke L, Hendrix A, Westbroek W, Gheldof A, Narine K, Pauwels P, Gespach C, Bracke M, De Wever O.  
Cancer Letters 2008 Aug; 266(2):263.

Application: WB, Human, Human colon-derived primary fibroblasts

- [Fibroblast activation protein and chronic liver disease.](#)

Wang XM, Yao TW, Nadvi NA, Osborne B, McCaughan GW, Gorrell MD.  
Frontiers in Bioscience 2008 Jan; 13:3168.

Application: WB, Human, Purified human FAP

## Disease

- [Tobacco Use Disorder](#)