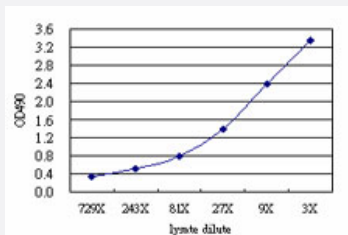


F11 (Human) Matched Antibody Pair

Catalog # H00002160-AP51

Size 1 Set

Applications



Sandwich ELISA detection sensitivity ranging from approximately 729x to 3x dilution of the F11 293T overexpression lysate (non-denatured).

Specification

Product Description	This antibody pair set comes with a matched antibody pair to detect and quantify the protein level of human F11.
Reactivity	Human
Quality Control Testing	Standard curve using F11 293T overexpression lysate (non-denatured) as an analyte. Sandwich ELISA detection sensitivity ranging from approximately 729x to 3x dilution of the F11 293T overexpression lysate (non-denatured).
Supplied Product	Antibody pair set content: 1. Capture antibody: mouse monoclonal anti-F11 (100 ug) 2. Detection antibody: rabbit purified polyclonal anti-F11 (50 ug) *Reagents are sufficient for at least 3-5 x 96 well plates using recommended protocols.
Storage Instruction	Store reagents of the antibody pair set at -20°C or lower. Please aliquot to avoid repeated freeze thaw cycle. Reagents should be returned to -20°C storage immediately after use.

Applications

- ELISA Pair (Transfected lysate)

[Protocol Download](#)

Gene Info — F11

Entrez GeneID	2160
Gene Name	F11
Gene Alias	FXI, MGC141891
Gene Description	coagulation factor XI
Omim ID	264900
Gene Ontology	Hyperlink
Gene Summary	This gene encodes coagulation factor XI of the blood coagulation cascade. This protein is present in plasma as a zymogen, which is a unique plasma coagulation enzyme because it exists as a homodimer consisting of two identical polypeptide chains linked by disulfide bonds. During activation of the plasma factor XI, an internal peptide bond is cleaved by factor XIIa (or XII) in each of the two chains, resulting in activated factor XIa, a serine protease composed of two heavy and two light chains held together by disulfide bonds. This activated plasma factor XI triggers the middle phase of the intrinsic pathway of blood coagulation by activating factor IX. Defects in this factor lead to Rosenthal syndrome, a blood coagulation abnormality. [provided by RefSeq]
Other Designations	plasma thromboplastin antecedent platelet coagulation factor XI

Pathway

- [Complement and coagulation cascades](#)

Disease

- [Cardiovascular Diseases](#)
- [Diabetes Mellitus](#)
- [Edema](#)
- [Factor XI Deficiency](#)
- [Genetic Predisposition to Disease](#)
- [Hypertension](#)
- [Kidney Failure](#)

- [Pre-Eclampsia](#)
- [Thrombophilia](#)
- [Venous Thrombosis](#)