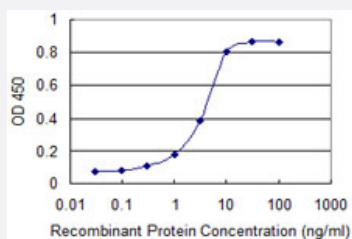


F2R monoclonal antibody (M01), clone 2C5

Catalog # H00002149-M01

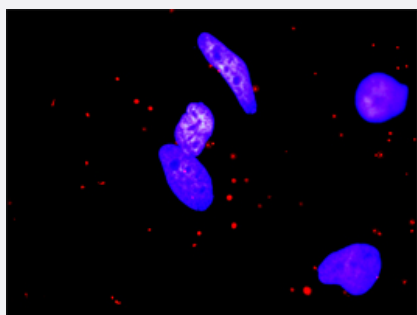
Size 100 ug

Applications



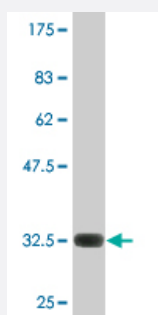
Sandwich ELISA (Recombinant protein)

Detection limit for recombinant GST tagged F2R is 0.1 ng/ml as a capture antibody.



In situ Proximity Ligation Assay (Cell)

Proximity Ligation Analysis of protein-protein interactions between MMP1 and F2R. HeLa cells were stained with anti-MMP1 rabbit purified polyclonal 1:1200 and anti-F2R mouse monoclonal antibody 1:50. Each red dot represents the detection of protein-protein interaction complex, and nuclei were counterstained with DAPI (blue).



Western Blot detection against Immunogen (32.45 KDa) .

Specification

Product Description

Mouse monoclonal antibody raised against a partial recombinant F2R.

Immunogen	F2R (NP_001983.1, 42 a.a. ~ 102 a.a) partial recombinant protein with GST tag. MW of the GST tag alone is 26 KDa.
Sequence	SFLLRNPNDKYEPFWEDEEKNESGLTEYRLVSINKSSPLQKQLPAFISEDASGYLTSSWLT
Host	Mouse
Reactivity	Human
Isotype	IgG2b Kappa
Quality Control Testing	Antibody Reactive Against Recombinant Protein. Western Blot detection against Immunogen (32.45 KDa) .
Storage Buffer	In 1x PBS, pH 7.4
Storage Instruction	Store at -20°C or lower. Aliquot to avoid repeated freezing and thawing.

Applications

- Western Blot (Recombinant protein)

[Protocol Download](#)

- Sandwich ELISA (Recombinant protein)

Detection limit for recombinant GST tagged F2R is 0.1 ng/ml as a capture antibody.

[Protocol Download](#)

- ELISA

- In situ* Proximity Ligation Assay (Cell)

Proximity Ligation Analysis of protein-protein interactions between MMP1 and F2R. HeLa cells were stained with anti-MMP1 rabbit purified polyclonal 1:1200 and anti-F2R mouse monoclonal antibody 1:50. Each red dot represents the detection of protein-protein interaction complex, and nuclei were counterstained with DAPI (blue).

Gene Info — F2R

Entrez GeneID	2149
GeneBank Accession#	NM_001992
Protein Accession#	NP_001983.1

Gene Name	F2R
Gene Alias	CF2R, HTR, PAR1, TR
Gene Description	coagulation factor II (thrombin) receptor
Omim ID	187930
Gene Ontology	Hyperlink
Gene Summary	Coagulation factor II receptor is a 7-transmembrane receptor involved in the regulation of thrombotic response. Proteolytic cleavage leads to the activation of the receptor. F2R is a G-protein coupled receptor family member. [provided by RefSeq]
Other Designations	coagulation factor II receptor protease-activated receptor 1 thrombin receptor

Publication Reference

- [Altered Protease-Activated Receptor-1 Expression and Signaling in a Malignant Pleural Mesothelioma Cell Line, NCI-H28, with Homozygous Deletion of the \$\beta\$ -Catenin Gene.](#)

Fazzini A.

PLoS One 2014 Nov; 9(11):e111550.

Application: IF, WB-Ce, Human, Primary mesothelial cells, Met-5A, NCI-H28, REN, Ist-Mes2, Mero-14 cells

Pathway

- [Calcium signaling pathway](#)
- [Complement and coagulation cascades](#)
- [Endocytosis](#)
- [Neuroactive ligand-receptor interaction](#)
- [Regulation of actin cytoskeleton](#)

Disease

- [Asthma](#)
- [Cardiovascular Diseases](#)
- [Coronary Disease](#)

- [Diabetes Mellitus](#)
- [Edema](#)
- [Genetic Predisposition to Disease](#)
- [Hypertension](#)
- [Myocardial Infarction](#)
- [Premature Birth](#)