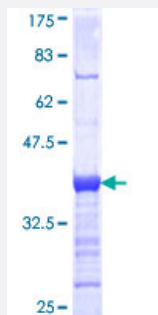


EXTL1 (Human) Recombinant Protein (Q01)

Catalog # H00002134-Q01

Size 25 ug, 10 ug

Applications



Specification

Product Description	Human EXTL1 partial ORF (NP_004446, 141 a.a. - 241 a.a.) recombinant protein with GST-tag at N-terminal.
Sequence	AQTGECSSMPLQWNRGRNHLVRLHPAPCPRTFQLGQAMVAEASPTVDSFRPGFDVALPFLPE AHPLRGGAPGQLRQHSPQPGVALLALEEERGGWRTADT
Host	Wheat Germ (in vitro)
Theoretical MW (kDa)	36.85
Interspecies Antigen Sequence	Mouse (70); Rat (68)
Preparation Method	in vitro wheat germ expression system
Purification	Glutathione Sepharose 4 Fast Flow
Quality Control Testing	12.5% SDS-PAGE Stained with Coomassie Blue.
Storage Buffer	50 mM Tris-HCl, 10 mM reduced Glutathione, pH=8.0 in the elution buffer.
Storage Instruction	Store at -80°C. Aliquot to avoid repeated freezing and thawing.
Note	Best use within three months from the date of receipt of this protein.

Applications

- Enzyme-linked Immunoabsorbent Assay
- Western Blot (Recombinant protein)
- Antibody Production
- Protein Array

Gene Info — EXTL1

Entrez GeneID [2134](#)

GeneBank Accession# [NM_004455](#)

Protein Accession# [NP_004446](#)

Gene Name EXTL1

Gene Alias EXTL, MGC70794

Gene Description exostoses (multiple)-like 1

Omim ID [601738](#)

Gene Ontology [Hyperlink](#)

Gene Summary This gene is a member of the multiple exostoses (EXT) family of glycosyltransferases, which function in the chain polymerization of heparan sulfate and heparin. The encoded protein harbors alpha 1,4- N-acetylglucosaminyltransferase activity, and is involved in chain elongation of heparan sulfate and possibly heparin. [provided by RefSeq]

Other Designations OTTHUMP00000008700|alpha-N-acetylglucosaminyltransferase II|exostosin-L|glucuronosyl-N-acetylglucosaminyl-proteoglycan 4-alpha-N- acetylglucosaminyltransferase|glucuronyl-N-acetylglucosaminylproteoglycan alpha-1,4-N- acetylglucosaminyltransferase

Pathway

- [Heparan sulfate biosynthesis](#)
- [Metabolic pathways](#)