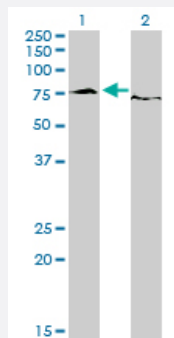


EWSR1 monoclonal antibody (M01), clone 5C10

Catalog # H00002130-M01

Size 100 ug

Applications

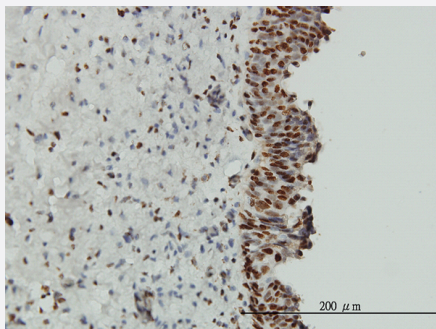


Western Blot (Transfected lysate)

Western Blot analysis of EWSR1 expression in transfected 293T cell line by EWSR1 monoclonal antibody (M01), clone 5C10.

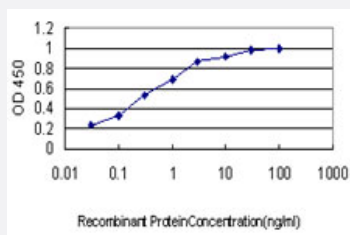
Lane 1: EWSR1 transfected lysate (68.5 kDa).

Lane 2: Non-transfected lysate.



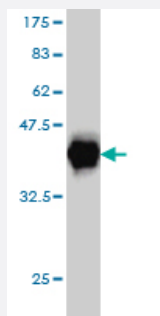
Immunohistochemistry (Formalin/PFA-fixed paraffin-embedded sections)

Immunoperoxidase of monoclonal antibody to EWSR1 on formalin-fixed paraffin-embedded human urinary bladder. [antibody concentration 3 ug/ml]



Sandwich ELISA (Recombinant protein)

Detection limit for recombinant GST tagged EWSR1 is approximately 0.03 ng/ml as a capture antibody.



Western Blot detection against Immunogen (36.3 KDa) .

Specification

Product Description	Mouse monoclonal antibody raised against a partial recombinant EWSR1.
Immunogen	EWSR1 (NP_005234, 358 a.a. ~ 453 a.a) partial recombinant protein with GST tag. MW of the GST tag alone is 26 KDa.
Sequence	SDNSAIYVQGLNDSVTLDDLADFFKQCGVVKMNKRTGQPMIHYLDKETGKPKGDATVSYEDPPT AKAAVEWFDGKDFQGSKLKVS LARKKPPMNS
Host	Mouse
Reactivity	Human
Isotype	IgG2a Kappa
Quality Control Testing	Antibody Reactive Against Recombinant Protein. Western Blot detection against Immunogen (36.3 KDa) .
Storage Buffer	In 1x PBS, pH 7.4
Storage Instruction	Store at -20°C or lower. Aliquot to avoid repeated freezing and thawing.

Applications

- Western Blot (Transfected lysate)

Western Blot analysis of EWSR1 expression in transfected 293T cell line by EWSR1 monoclonal antibody (M01), clone 5C10.

Lane 1: EWSR1 transfected lysate(68.5 KDa).

Lane 2: Non-transfected lysate.

[Protocol Download](#)

- Western Blot (Recombinant protein)

[Protocol Download](#)

- Immunohistochemistry (Formalin/PFA-fixed paraffin-embedded sections)

Immunoperoxidase of monoclonal antibody to EWSR1 on formalin-fixed paraffin-embedded human urinary bladder. [antibody concentration 3 ug/ml]

[Protocol Download](#)

- Sandwich ELISA (Recombinant protein)

Detection limit for recombinant GST tagged EWSR1 is approximately 0.03ng/ml as a capture antibody.

[Protocol Download](#)

- ELISA

Gene Info — EWSR1

Entrez GeneID [2130](#)

GeneBank Accession# [NM_005243](#)

Protein Accession# [NP_005234](#)

Gene Name EWSR1

Gene Alias EWS

Gene Description Ewing sarcoma breakpoint region 1

Omim ID [133450](#)

Gene Ontology [Hyperlink](#)

Gene Summary This gene encodes a multifunctional protein that is involved in various cellular processes, including gene expression, cell signaling, and RNA processing and transport. The protein includes an N-terminal transcriptional activation domain and a C-terminal RNA-binding domain. Chromosomal translocations between this gene and various genes encoding transcription factors result in the production of chimeric proteins that are involved in tumorigenesis. These chimeric proteins usually consist of the N-terminal transcriptional activation domain of this protein fused to the C-terminal DNA-binding domain of the transcription factor protein. Mutations in this gene, specifically a t(11;22)(q24;q12) translocation, are known to cause Ewing sarcoma as well as neuroectodermal and various other tumors. Alternative splicing of this gene results in multiple transcript variants. Related pseudogenes have been identified on chromosomes 1 and 14. [provided by RefSeq]

Other Designations Ewings sarcoma EWS-Fli1 (type 1) oncogene|bK984G1.4 (Ewing sarcoma breakpoint region 1 protein)