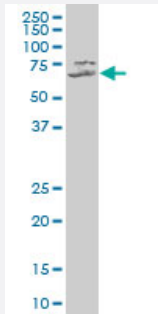


EWSR1 polyclonal antibody (A01)

Catalog # H00002130-A01

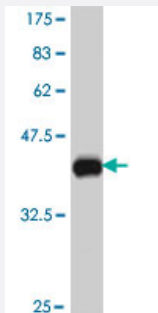
Size 50 uL

Applications



Western Blot (Cell lysate)

EWSR1 polyclonal antibody (A01), Lot # 050921JC01 Western Blot analysis of EWSR1 expression in HeLa (Cat # L013V1).



Western Blot detection against Immunogen (36.67 KDa) .

Specification

Product Description	Mouse polyclonal antibody raised against a partial recombinant EWSR1.
Immunogen	EWSR1 (NP_005234, 358 a.a. ~ 453 a.a) partial recombinant protein with GST tag.
Sequence	SDNSAIYVQGLNDSVTLLDADFFKQCGVVKMNKRTGQPMIHYLDKETGKPKGDATVSYEDPPT AKAAVEWFDGKDFQGSKLKVS LARKKPPMNS
Host	Mouse
Reactivity	Human
Quality Control Testing	Antibody Reactive Against Recombinant Protein. Western Blot detection against Immunogen (36.67 KDa) .

Storage Buffer	50 % glycerol
----------------	---------------

Storage Instruction	Store at -20°C or lower. Aliquot to avoid repeated freezing and thawing.
---------------------	--

Applications

- Western Blot (Cell lysate)

EWSR1 polyclonal antibody (A01), Lot # 050921JC01 Western Blot analysis of EWSR1 expression in HeLa (Cat # L013V1).

[Protocol Download](#)

- Western Blot (Recombinant protein)

[Protocol Download](#)

- ELISA

Gene Info — EWSR1

Entrez GeneID	2130
---------------	----------------------

GeneBank Accession#	NM_005243
---------------------	---------------------------

Protein Accession#	NP_005234
--------------------	---------------------------

Gene Name	EWSR1
-----------	-------

Gene Alias	EWS
------------	-----

Gene Description	Ewing sarcoma breakpoint region 1
------------------	-----------------------------------

Omim ID	133450
---------	------------------------

Gene Ontology	Hyperlink
---------------	---------------------------

Gene Summary

This gene encodes a multifunctional protein that is involved in various cellular processes, including gene expression, cell signaling, and RNA processing and transport. The protein includes an N-terminal transcriptional activation domain and a C-terminal RNA-binding domain. Chromosomal translocations between this gene and various genes encoding transcription factors result in the production of chimeric proteins that are involved in tumorigenesis. These chimeric proteins usually consist of the N-terminal transcriptional activation domain of this protein fused to the C-terminal DNA-binding domain of the transcription factor protein. Mutations in this gene, specifically a t(11;22)(q24;q12) translocation, are known to cause Ewing sarcoma as well as neuroectodermal and various other tumors. Alternative splicing of this gene results in multiple transcript variants. Related pseudogenes have been identified on chromosomes 1 and 14. [provided by RefSeq]

Other Designations

Ewings sarcoma EWS-Fli1 (type 1) oncogene|bK984G1.4 (Ewing sarcoma breakpoint region 1 p
rotein)
