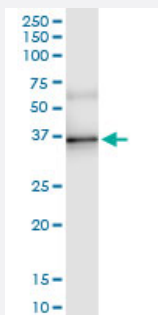


ESD (Human) IP-WB Antibody Pair

Catalog # H00002098-PW1

Size 1 Set

Applications



Immunoprecipitation of ESD transfected lysate using rabbit polyclonal anti-ESD and Protein A Magnetic Bead ([U0007](#)), and immunoblotted with mouse purified polyclonal anti-ESD.

Specification

Product Description	This IP-WB antibody pair set comes with one antibody for immunoprecipitation and another to detect the precipitated protein in western blot.
Reactivity	Human
Interspecies Antigen Sequence	Rat (91%)
Quality Control Testing	Immunoprecipitation-Western Blot (IP-WB) Immunoprecipitation of ESD transfected lysate using rabbit polyclonal anti-ESD and Protein A Magnetic Bead (U0007), and immunoblotted with mouse purified polyclonal anti-ESD.
Supplied Product	Antibody pair set content: 1. Antibody pair for IP: rabbit polyclonal anti-ESD (300 ul) 2. Antibody pair for WB: mouse purified polyclonal anti-ESD (50 ug)
Storage Instruction	Store reagents of the antibody pair set at -20°C or lower. Please aliquot to avoid repeated freeze thaw cycle. Reagents should be returned to -20°C storage immediately after use.

Applications

- Immunoprecipitation-Western Blot

[Protocol Download](#)

Gene Info — ESD

Entrez GeneID	2098
Gene Name	ESD
Gene Alias	-
Gene Description	esterase D/formylglutathione hydrolase
Omim ID	133280
Gene Ontology	Hyperlink
Gene Summary	This gene encodes a serine hydrolase that belongs to the esterase D family. The encoded enzyme is active toward numerous substrates including O-acetylated sialic acids, and it may be involved in the recycling of sialic acids. This gene is used as a genetic marker for retinoblastoma and Wils on's disease. [provided by RefSeq
Other Designations	OTTHUMP00000018374 OTTHUMP00000040929 S-formylglutathione hydrolase esterase 10

Disease

- [Genetic Predisposition to Disease](#)
- [Liver Cirrhosis](#)
- [Tuberculosis](#)