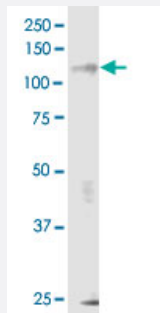


ERN1 monoclonal antibody (M02), clone 8D12

Catalog # H00002081-M02

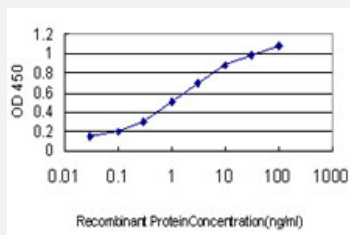
Size 100 ug

Applications



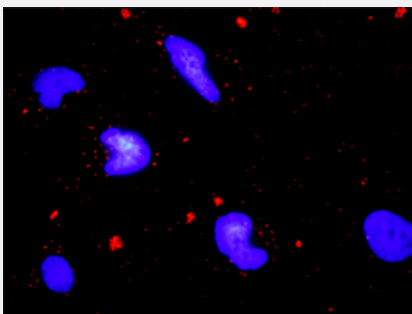
Western Blot (Cell lysate)

ERN1 monoclonal antibody (M02), clone 8D12. Western Blot analysis of ERN1 expression in LNCaP.



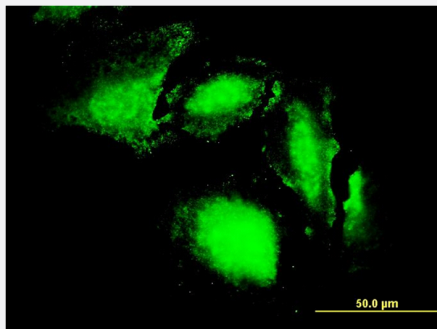
Sandwich ELISA (Recombinant protein)

Detection limit for recombinant GST tagged ERN1 is approximately 0.03ng/ml as a capture antibody.



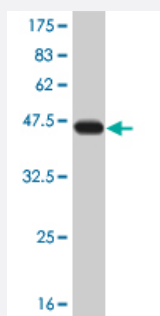
In situ Proximity Ligation Assay (Cell)

Proximity Ligation Analysis of protein-protein interactions between TRAF2 and ERN1. HeLa cells were stained with anti-TRAF2 rabbit purified polyclonal 1:1200 and anti-ERN1 mouse monoclonal antibody 1:50. Each red dot represents the detection of protein-protein interaction complex, and nuclei were counterstained with DAPI (blue).



Immunofluorescence

Immunofluorescence of monoclonal antibody to ERN1 on HeLa cell. [antibody concentration 25 ug/ml]



Western Blot detection against Immunogen (36.63 KDa) .

Specification

Product Description	Mouse monoclonal antibody raised against a partial recombinant ERN1.
Immunogen	ERN1 (AAC25991, 401 a.a. ~ 500 a.a) partial recombinant protein with GST tag. MW of the GST tag alone is 26 KDa.
Sequence	EEVINLVDQTSENAPTTVSRDVEEKPAHAPARPEAPVDSMLKDMATILSTFLLIGWVAFIITYPLSM HQQQQLQHQQFQKELEKIQLLQQQQQLPFHP
Host	Mouse
Reactivity	Human
Interspecies Antigen Sequence	Mouse (85); Rat (87)
Isotype	IgG2a Kappa
Quality Control Testing	Antibody Reactive Against Recombinant Protein. Western Blot detection against Immunogen (36.63 KDa) .
Storage Buffer	In 1x PBS, pH 7.4
Storage Instruction	Store at -20°C or lower. Aliquot to avoid repeated freezing and thawing.

Applications

- Western Blot (Cell lysate)

ERN1 monoclonal antibody (M02), clone 8D12. Western Blot analysis of ERN1 expression in LNCaP.

[Protocol Download](#)

- Western Blot (Recombinant protein)

[Protocol Download](#)

- Sandwich ELISA (Recombinant protein)

Detection limit for recombinant GST tagged ERN1 is approximately 0.03ng/ml as a capture antibody.

[Protocol Download](#)

- ELISA

- In situ* Proximity Ligation Assay (Cell)

Proximity Ligation Analysis of protein-protein interactions between TRAF2 and ERN1. HeLa cells were stained with anti-TRAF2 rabbit purified polyclonal 1:1200 and anti-ERN1 mouse monoclonal antibody 1:50. Each red dot represents the detection of protein-protein interaction complex, and nuclei were counterstained with DAPI (blue).

- Immunofluorescence

Immunofluorescence of monoclonal antibody to ERN1 on HeLa cell. [antibody concentration 25 ug/ml]

Gene Info — ERN1

Entrez GeneID [2081](#)

GeneBank Accession# [AF059198](#)

Protein Accession# [AAC25991](#)

Gene Name ERN1

Gene Alias FLJ30999, IRE1, IRE1P, MGC163277, MGC163279

Gene Description endoplasmic reticulum to nucleus signaling 1

Omim ID [604033](#)

Gene Ontology [Hyperlink](#)

Gene Summary

The protein encoded by this gene is the ER to nucleus signalling 1 protein, a human homologue of the yeast Ire1 gene product. This protein possesses intrinsic kinase activity and an endoribonuclease activity and it is important in altering gene expression as a response to endoplasmic reticulum-based stress signals. [provided by RefSeq]

Other Designations

ER to nucleus signalling 1|endoplasmic reticulum to nucleus signalling 1|inositol-requiring 1|protein kinase/endoribonuclease

Disease

- [Cardiovascular Diseases](#)
- [Diabetes Mellitus](#)
- [Edema](#)
- [Head and Neck Neoplasms](#)
- [Kidney Failure](#)
- [Neoplasm Recurrence](#)
- [Neoplasms](#)
- [Tobacco Use Disorder](#)