

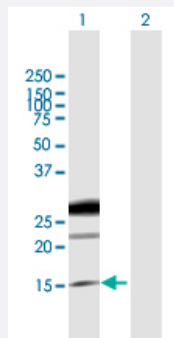
MaxPab®

# EREK purified MaxPab mouse polyclonal antibody (B01P)

Catalog # H00002069-B01P

Size 50 ug

## Applications



### Western Blot (Transfected lysate)

Western Blot analysis of EREK expression in transfected 293T cell line ([H00002069-T02](#)) by EREK MaxPab polyclonal antibody.

Lane 1: EREK transfected lysate(19.00 KDa).

Lane 2: Non-transfected lysate.

## Specification

Product Description	Mouse polyclonal antibody raised against a full-length human EREK protein.
Immunogen	EREK (NP_001423.1, 1 a.a. ~ 169 a.a) full-length human protein.
Sequence	MTAGRRMEMLCAGRVPALLLCLGFHLLQAVLSTTVIPSCIPGESSDNCTALVQTEDNPRVAQVSIT KCSSDMNGYCLHGQCILVDMSQNYCRCEVGYTGVRCEHFFLTVHQPLSKEYVALTVILILFLITVV GSTYYFCRWYRNRKSKEPKKEYERTSGDPELPQV
Host	Mouse
Reactivity	Human
Quality Control Testing	Antibody reactive against mammalian transfected lysate.
Storage Buffer	In 1x PBS, pH 7.4
Storage Instruction	Store at -20°C or lower. Aliquot to avoid repeated freezing and thawing.

## Applications

- Western Blot (Transfected lysate)

Western Blot analysis of EREG expression in transfected 293T cell line ([H00002069-T02](#)) by EREG MaxPab polyclonal antibody.

Lane 1: EREG transfected lysate(19.00 KDa).

Lane 2: Non-transfected lysate.

[Protocol Download](#)

## Gene Info — EREG

Entrez GeneID [2069](#)

GeneBank Accession# [NM\\_001432](#)

Protein Accession# [NP\\_001423.1](#)

Gene Name EREG

Gene Alias ER

Gene Description epiregulin

Omim ID [602061](#)

Gene Ontology [Hyperlink](#)

**Gene Summary** Epiregulin is a member of the epidermal growth factor family. Epiregulin can function as a ligand of EGFR (epidermal growth factor receptor), as well as a ligand of most members of the ERBB (v-erb-b2 oncogene homolog) family of tyrosine-kinase receptors. [provided by RefSeq]

Other Designations -

## Pathway

- [ErbB signaling pathway](#)