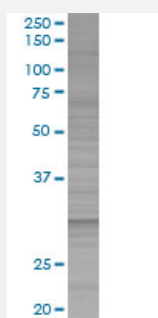


STX2 293T Cell Transient Overexpression Lysate(Denatured)

Catalog # H00002054-T01

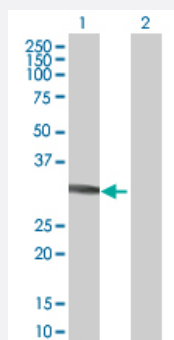
Size 100 uL

Applications



SDS-PAGE Gel

EPIM transfected lysate.



Western Blot

Lane 1: EPIM transfected lysate (33.3 KDa)

Lane 2: Non-transfected lysate.

Specification

Transfected Cell Line 293T

Plasmid pCMV-STX2 full-length

Host Human

Theoretical MW (kDa) 33.3

Quality Control Testing Transient overexpression cell lysate was tested with Anti-STX2 antibody ([H00002054-B01](#)) by Western Blots.
 SDS-PAGE Gel
 EPIM transfected lysate.
 Western Blot
 Lane 1: EPIM transfected lysate (33.3 KDa)
 Lane 2: Non-transfected lysate.

Storage Buffer

1X Sample Buffer (50 mM Tris-HCl, 2% SDS, 10% glycerol, 300 mM 2-mercaptoethanol, 0.01% Bromophenol blue)

Storage Instruction

Store at -80°C. Aliquot to avoid repeated freezing and thawing.

Applications

- Western Blot

Gene Info — STX2

Entrez GeneID

[2054](#)

GeneBank Accession#

[NM_001980.2](#)

Protein Accession#

-

Gene Name

STX2

Gene Alias

EPIM, EPM, MGC51014, STX2A, STX2B, STX2C

Gene Description

syntaxin 2

Omim ID

[132350](#)

Gene Ontology

[Hyperlink](#)

Gene Summary

The product of this gene belongs to the syntaxin/epimorphin family of proteins. The syntaxins are a large protein family implicated in the targeting and fusion of intracellular transport vesicles. The product of this gene regulates epithelial-mesenchymal interactions and epithelial cell morphogenesis and activation. Alternatively spliced transcript variants encoding different isoforms have been identified. [provided by RefSeq]

Other Designations

epimorphin

Pathway

- [SNARE interactions in vesicular transport](#)