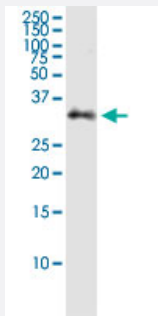


# STX2 (Human) IP-WB Antibody Pair

Catalog # H00002054-PW2

Size 1 Set

## Applications



Immunoprecipitation of STX2 transfected lysate using rabbit polyclonal anti-STX2 and Protein A Magnetic Bead ([U0007](#)), and immunoblotted with mouse purified polyclonal anti-STX2.

## Specification

<b>Product Description</b>	This IP-WB antibody pair set comes with one antibody for immunoprecipitation and another to detect the precipitated protein in western blot.
<b>Reactivity</b>	Human
<b>Quality Control Testing</b>	Immunoprecipitation-Western Blot (IP-WB) Immunoprecipitation of STX2 transfected lysate using rabbit polyclonal anti-STX2 and Protein A Magnetic Bead ( <a href="#">U0007</a> ), and immunoblotted with mouse purified polyclonal anti-STX2.
<b>Supplied Product</b>	Antibody pair set content: 1. Antibody pair for IP: rabbit polyclonal anti-STX2 (300 ul) 2. Antibody pair for WB: mouse purified polyclonal anti-STX2 (50 ug)
<b>Storage Instruction</b>	Store reagents of the antibody pair set at -20°C or lower. Please aliquot to avoid repeated freeze thaw cycle. Reagents should be returned to -20°C storage immediately after use.

## Applications

- Immunoprecipitation-Western Blot

[Protocol Download](#)

## Gene Info — STX2

Entrez GeneID	<a href="#">2054</a>
Gene Name	STX2
Gene Alias	EPIM, EPM, MGC51014, STX2A, STX2B, STX2C
Gene Description	syntaxin 2
Omim ID	<a href="#">132350</a>
Gene Ontology	<a href="#">Hyperlink</a>
Gene Summary	<p>The product of this gene belongs to the syntaxin/epimorphin family of proteins. The syntaxins are a large protein family implicated in the targeting and fusion of intracellular transport vesicles. The product of this gene regulates epithelial-mesenchymal interactions and epithelial cell morphogenesis and activation. Alternatively spliced transcript variants encoding different isoforms have been identified. [provided by RefSeq]</p>
Other Designations	epimorphin

## Pathway

- [SNARE interactions in vesicular transport](#)