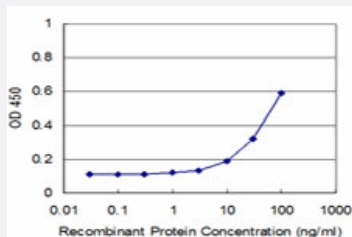


EPHB4 monoclonal antibody (M03), clone 4G11

Catalog # H00002050-M03

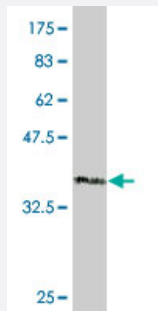
Size 100 ug

Applications



Sandwich ELISA (Recombinant protein)

Detection limit for recombinant GST tagged EPHB4 is approximately 3ng/ml as a capture antibody.



Western Blot detection against Immunogen (39.49 KDa) .

Specification

Product Description	Mouse monoclonal antibody raised against a partial recombinant EPHB4.
Immunogen	EPHB4 (AAH52804, 198 a.a. ~ 323 a.a) partial recombinant protein with GST tag. MW of the GST tag alone is 26 KDa.
Sequence	AQLTVNLTRFPETVPRELVVVPVAGSCVVDVAPAGPSPSLYCREDDGQWAEQPVTCSCAPGFEEAEGNTKCRACAQGTFKPLSGEGSCQPCPANSHSNTIGSAVCQCRVGYFRARTDPRGAPCTTP
Host	Mouse
Reactivity	Human

Interspecies Antigen Sequence	Mouse (78); Rat (78)
Isotype	IgG2b Kappa
Quality Control Testing	Antibody Reactive Against Recombinant Protein. Western Blot detection against Immunogen (39.49 KDa) .
Storage Buffer	In 1x PBS, pH 7.4
Storage Instruction	Store at -20°C or lower. Aliquot to avoid repeated freezing and thawing.

Applications

- Western Blot (Recombinant protein)

[Protocol Download](#)

- Sandwich ELISA (Recombinant protein)

Detection limit for recombinant GST tagged EPHB4 is approximately 3ng/ml as a capture antibody.

[Protocol Download](#)

- ELISA

Gene Info — EPHB4

Entrez GeneID	2050
GeneBank Accession#	BC052804
Protein Accession#	AAH52804
Gene Name	EPHB4
Gene Alias	HTK, MYK1, TYRO11
Gene Description	EPH receptor B4
Omim ID	600011
Gene Ontology	Hyperlink

Gene Summary

Ephrin receptors and their ligands, the ephrins, mediate numerous developmental processes, particularly in the nervous system. Based on their structures and sequence relationships, ephrins are divided into the ephrin-A (EFNA) class, which are anchored to the membrane by a glycosylphosphatidylinositol linkage, and the ephrin-B (EFNB) class, which are transmembrane proteins. The Eph family of receptors are divided into 2 groups based on the similarity of their extracellular domain sequences and their affinities for binding ephrin-A and ephrin-B ligands. Ephrin receptors make up the largest subgroup of the receptor tyrosine kinase (RTK) family. The protein encoded by this gene binds to ephrin-B2 and plays an essential role in vascular development. [provided by RefSeq]

Other Designations

ephrin receptor EphB4|hepatoma transmembrane kinase|soluble EPHB4 variant 1|soluble EPHB4 variant 2|soluble EPHB4 variant 3

Pathway

- [Axon guidance](#)

Disease

- [Intracranial Arteriovenous Malformations](#)
- [Intracranial Hemorrhages](#)