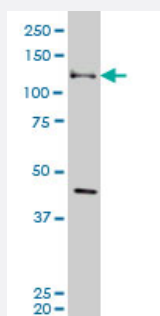


EPHB3 monoclonal antibody (M08), clone 4E9

Catalog # H00002049-M08

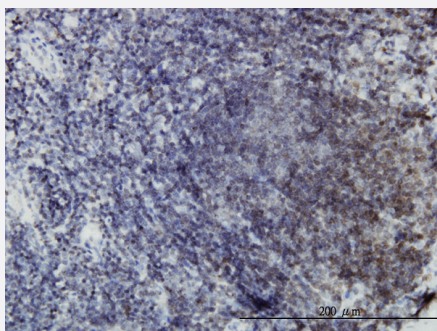
Size 100 ug

Applications



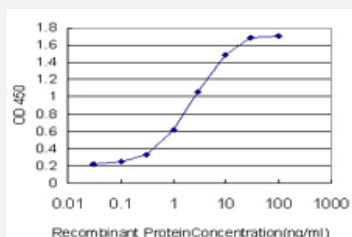
Western Blot (Cell lysate)

EPHB3 monoclonal antibody (M08), clone 4E9 Western Blot analysis of EPHB3 expression in A-431 (Cat # L015V1).



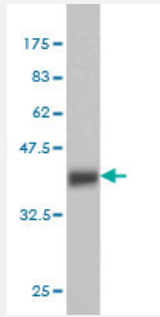
Immunohistochemistry (Formalin/PFA-fixed paraffin-embedded sections)

Immunoperoxidase of monoclonal antibody to EPHB3 on formalin-fixed paraffin-embedded human lymph node. [antibody concentration 3 ug/ml]



Sandwich ELISA (Recombinant protein)

Detection limit for recombinant GST tagged EPHB3 is approximately 0.03ng/ml as a capture antibody.



Western Blot detection against Immunogen (36.63 KDa) .

Specification

Product Description	Mouse monoclonal antibody raised against a partial recombinant EPHB3.
Immunogen	EPHB3 (NP_004434, 899 a.a. ~ 997 a.a) partial recombinant protein with GST tag. MW of the GST tag alone is 26 KDa.
Sequence	AASLKVIASAQSGMSQPLLDRTVPDYTTFTTVGDWLDAIKMGRYKESFVSAGFASFDLVAQMTAE DLLRIGVTLAGHQKKILSSIQDMRLQMNQTLVPVQ
Host	Mouse
Reactivity	Human
Isotype	IgG1 Kappa
Quality Control Testing	Antibody Reactive Against Recombinant Protein. Western Blot detection against Immunogen (36.63 KDa) .
Storage Buffer	In 1x PBS, pH 7.4
Storage Instruction	Store at -20°C or lower. Aliquot to avoid repeated freezing and thawing.

Applications

- Western Blot (Cell lysate)

EPHB3 monoclonal antibody (M08), clone 4E9 Western Blot analysis of EPHB3 expression in A-431 (Cat # L015V1).

[Protocol Download](#)

- Western Blot (Recombinant protein)

[Protocol Download](#)

- Immunohistochemistry (Formalin/PFA-fixed paraffin-embedded sections)

Immunoperoxidase of monoclonal antibody to EPHB3 on formalin-fixed paraffin-embedded human lymph node. [antibody concentration 3 ug/ml]

[Protocol Download](#)

- Sandwich ELISA (Recombinant protein)

Detection limit for recombinant GST tagged EPHB3 is approximately 0.03ng/ml as a capture antibody.

[Protocol Download](#)

- ELISA

Gene Info — EPHB3

Entrez GeneID [2049](#)

GeneBank Accession# [NM_004443](#)

Protein Accession# [NP_004434](#)

Gene Name EPHB3

Gene Alias ETK2, HEK2, TYRO6

Gene Description EPH receptor B3

Omim ID [601839](#)

Gene Ontology [Hyperlink](#)

Gene Summary Ephrin receptors and their ligands, the ephrins, mediate numerous developmental processes, particularly in the nervous system. Based on their structures and sequence relationships, ephrins are divided into the ephrin-A (EFNA) class, which are anchored to the membrane by a glycosylphosphatidylinositol linkage, and the ephrin-B (EFNB) class, which are transmembrane proteins. The Eph family of receptors are divided into 2 groups based on the similarity of their extracellular domain sequences and their affinities for binding ephrin-A and ephrin-B ligands. Ephrin receptors make up the largest subgroup of the receptor tyrosine kinase (RTK) family. The protein encoded by this gene is a receptor for ephrin-B family members. [provided by RefSeq]

Other Designations EPH-like tyrosine kinase-2|ephrin receptor EphB3|human embryo kinase 2

Pathway

- [Axon guidance](#)

Disease

- [Cleft Lip](#)
- [Cleft Palate](#)
- [Tooth Abnormalities](#)