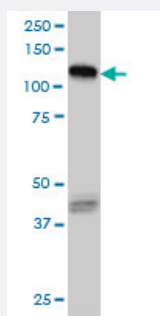


EPHB3 monoclonal antibody (M01), clone 1B3

Catalog # H00002049-M01

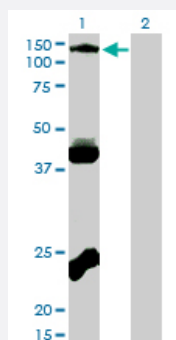
Size 100 ug

Applications



Western Blot (Cell lysate)

EPHB3 monoclonal antibody (M01), clone 1B3 Western Blot analysis of EPHB3 expression in HeLa (Cat # L013V1).

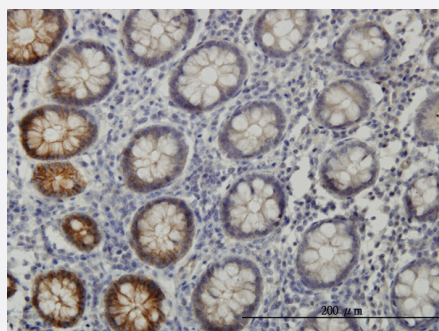


Western Blot (Transfected lysate)

Western Blot analysis of EPHB3 expression in transfected 293T cell line by EPHB3 monoclonal antibody (M01), clone 1B3.

Lane 1: EPHB3 transfected lysate(110.3 KDa).

Lane 2: Non-transfected lysate.

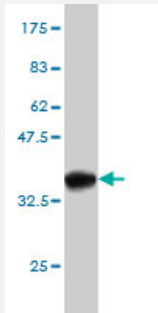
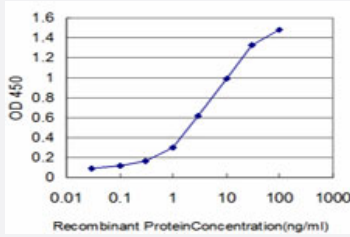


Immunohistochemistry (Formalin/PFA-fixed paraffin-embedded sections)

Immunoperoxidase of monoclonal antibody to EPHB3 on formalin-fixed paraffin-embedded human colon. [antibody concentration 3 ug/ml]

Sandwich ELISA (Recombinant protein)

Detection limit for recombinant GST tagged EPHB3 is approximately 0.1ng/ml as a capture antibody.



Western Blot detection against Immunogen (36.63 KDa) .

Specification

Product Description	Mouse monoclonal antibody raised against a partial recombinant EPHB3.
Immunogen	EPHB3 (NP_004434, 899 a.a. ~ 997 a.a) partial recombinant protein with GST tag. MW of the GST tag alone is 26 KDa.
Sequence	AASLKVIASAQSGMSQPLLDRTVPDYTTFTTVGDWLDAIKMGRYKESFVSAGFASFDLVAQMTAE DLLRIGVTLAGHQKKILSSIQDMRLQMNQTLPVQ
Host	Mouse
Reactivity	Human
Isotype	IgG2a Kappa
Quality Control Testing	Antibody Reactive Against Recombinant Protein. Western Blot detection against Immunogen (36.63 KDa) .
Storage Buffer	In 1x PBS, pH 7.4
Storage Instruction	Store at -20°C or lower. Aliquot to avoid repeated freezing and thawing.

Applications

- Western Blot (Cell lysate)

EPHB3 monoclonal antibody (M01), clone 1B3 Western Blot analysis of EPHB3 expression in HeLa (Cat # L013V1).

[Protocol Download](#)

- Western Blot (Transfected lysate)

Western Blot analysis of EPHB3 expression in transfected 293T cell line by EPHB3 monoclonal antibody (M01), clone 1B3.

Lane 1: EPHB3 transfected lysate(110.3 KDa).

Lane 2: Non-transfected lysate.

[Protocol Download](#)

- Western Blot (Recombinant protein)

[Protocol Download](#)

- Immunohistochemistry (Formalin/PFA-fixed paraffin-embedded sections)

Immunoperoxidase of monoclonal antibody to EPHB3 on formalin-fixed paraffin-embedded human colon. [antibody concentration 3 ug/ml]

[Protocol Download](#)

- Sandwich ELISA (Recombinant protein)

Detection limit for recombinant GST tagged EPHB3 is approximately 0.1ng/ml as a capture antibody.

[Protocol Download](#)

- ELISA

Gene Info — EPHB3

Entrez GeneID	2049
---------------	----------------------

GeneBank Accession#	NM_004443
---------------------	---------------------------

Protein Accession#	NP_004434
--------------------	---------------------------

Gene Name	EPHB3
-----------	-------

Gene Alias	ETK2, HEK2, TYRO6
------------	-------------------

Gene Description	EPH receptor B3
------------------	-----------------

Omim ID	601839
---------	------------------------

Gene Ontology

[Hyperlink](#)

Gene Summary

Ephrin receptors and their ligands, the ephrins, mediate numerous developmental processes, particularly in the nervous system. Based on their structures and sequence relationships, ephrins are divided into the ephrin-A (EFNA) class, which are anchored to the membrane by a glycosylphosphatidylinositol linkage, and the ephrin-B (EFNB) class, which are transmembrane proteins. The Eph family of receptors are divided into 2 groups based on the similarity of their extracellular domain sequences and their affinities for binding ephrin-A and ephrin-B ligands. Ephrin receptors make up the largest subgroup of the receptor tyrosine kinase (RTK) family. The protein encoded by this gene is a receptor for ephrin-B family members. [provided by RefSeq]

Other Designations

EPH-like tyrosine kinase-2|ephrin receptor EphB3|human embryo kinase 2

Publication Reference

- [EphB3 interacts with initiator caspases and FHL-2 to activate dependence receptor cell death in oligodendrocytes after brain injury.](#)

Yanina Tsenkina, Stephen A Tapanes, Madelen M Díaz, David J Titus, Shyam Gajavelli, Ross Bullock, Coleen M Atkins, Daniel J Liebl.

Brain Communications 2020 Oct; 2(2):fcaa175.

Application: IP, WB-Tr, Human, Mouse, HEK 293T cells, Mouse brain

- [EphB3 signaling induces cortical endothelial cell death and disrupts the blood-brain barrier after traumatic brain injury.](#)

Assis-Nascimento P, Tsenkina Y, Liebl DJ.

Cell Death & Disease 2018 Jan; 9(1):7.

Application: WB-Ce, Human, HUVECs

- [The simultaneous expression of both ephrin B3 receptor and E-cadherin in Barrett's adenocarcinoma is associated with favorable clinical staging.](#)

Schauer MC, Stoecklein NH, Theisen J, Kröpil F, Baldus S, Hoelscher A, Feith M, Bölke E, Matuschek C, Budach W, Knoefel WT.

European Journal of Medical Research 2012 May; 17:10.

Application: IHC-Fr, Human, Human esophageal adenocarcinoma

- [Complementary expression and repulsive signaling suggest that EphB receptors and ephrin-B ligands control cell positioning in the gastric epithelium.](#)

Ogawa K, Takemoto N, Ishii M, Pasquale EB, Nakajima T.

Histochemistry and Cell Biology 2011 Dec; 136(6):616.

Application: IHC-Fr, IHC-P, IP, WB, Mouse, Mouse gastric corpus mucosa

- [Complementary expression of EphB receptors and ephrin-B ligand in the pyloric and duodenal epithelium of adult mice.](#)

Ishii M, Nakajima T, Ogawa K.

Histochemistry and Cell Biology 2011 Sep; 136(3):345.

Application: IF, IHC-Fr, IP, WB-Ti, Mouse, Pyloric and duodenal epithelium

- [Class I and III HDACs and loss of active chromatin features contribute to epigenetic silencing of CDX1 and EPHB tumor suppressor genes in colorectal cancer.](#)

Ronsch K, Jager M, Schopflin A, Danciu M, Lassmann S, Hecht A.

Epigenetics 2011 May; 6(5):610.

Application: WB-Ce, Human, LS174T, SW480, HCT116, HT29, HEK293, U2OS cells

- [Microarray-Based Response Prediction in Esophageal Adenocarcinoma.](#)

Schauer M, Janssen KP, Rimkus C, Raggi M, Feith M, Friess H, Theisen J.

Clinical Cancer Research 2010 Jan; 16(1):330.

Application: IHC-Fr, Human, Barrett's carcinoma tissues

Pathway

- [Axon guidance](#)

Disease

- [Cleft Lip](#)
- [Cleft Palate](#)
- [Tooth Abnormalities](#)