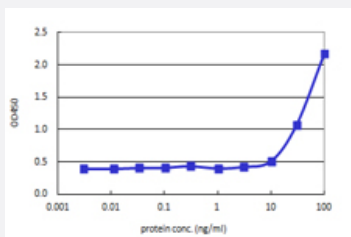


EPHB3 (Human) Matched Antibody Pair

Catalog # H00002049-AP41

Size 1 Set

Applications



Sandwich ELISA detection sensitivity ranging from 3 ng/ml to 100 ng/ml.

Specification

Product Description

This antibody pair set comes with a matched antibody pair to detect and quantify the protein level of human EPHB3.

Reactivity

Human

Quality Control Testing

Standard curve using recombinant protein (H00002049-Q01) as an analyte.
Sandwich ELISA detection sensitivity ranging from 3 ng/ml to 100 ng/ml.

Supplied Product

Antibody pair set content:

1. Capture antibody: mouse monoclonal anti-EPHB3, IgG1 Kappa (100 ug)
2. Detection antibody: biotinylated mouse monoclonal anti-EPHB3, IgG2a Kappa (50 ug)

*Reagents are sufficient for at least 3-5 x 96 well plates using recommended protocols.

Storage Instruction

Store reagents of the antibody pair set at -20°C or lower. Please aliquot to avoid repeated freeze thaw cycle. Reagents should be returned to -20°C storage immediately after use.

Applications

- ELISA Pair (Recombinant protein)

[Protocol Download](#)

Gene Info — EPHB3

Entrez GeneID	2049
Gene Name	EPHB3
Gene Alias	ETK2, HEK2, TYRO6
Gene Description	EPH receptor B3
Omim ID	601839
Gene Ontology	Hyperlink
Gene Summary	Ephrin receptors and their ligands, the ephrins, mediate numerous developmental processes, particularly in the nervous system. Based on their structures and sequence relationships, ephrins are divided into the ephrin-A (EFNA) class, which are anchored to the membrane by a glycosylphosphatidylinositol linkage, and the ephrin-B (EFNB) class, which are transmembrane proteins. The Eph family of receptors are divided into 2 groups based on the similarity of their extracellular domain sequences and their affinities for binding ephrin-A and ephrin-B ligands. Ephrin receptors make up the largest subgroup of the receptor tyrosine kinase (RTK) family. The protein encoded by this gene is a receptor for ephrin-B family members. [provided by RefSeq]
Other Designations	EPH-like tyrosine kinase-2 ephrin receptor EphB3 human embryo kinase 2

Pathway

- [Axon guidance](#)

Disease

- [Cleft Lip](#)
- [Cleft Palate](#)
- [Tooth Abnormalities](#)