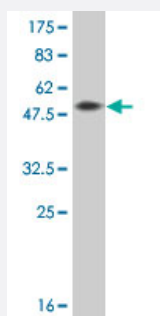


EPHA7 monoclonal antibody (M02A), clone 3D11

Catalog # H00002045-M02A

Size 200 uL

Applications



Western Blot detection against Immunogen (56.32 KDa) .

Specification

Product Description	Mouse monoclonal antibody raised against a full length recombinant EPHA7.
Immunogen	EPHA7 (AAH27940.1, 1 a.a. ~ 279 a.a) full-length recombinant protein with GST tag. MW of the GST tag alone is 26 KDa.
Sequence	MVFQTRYPSWILCYWLLRFAHTGEAQAQKEVLLLD SKAQQTELEWISSPPNGWEEISGLDENYT PIRTYQVCQVMEPNQNNWLRTNWISKGNAQRIFVELKFTLRDCNSLPGVLGTCKETFNLYYETDY DTGRNVRENLYVKIDTIAADESFTQGD LGERKMKLNTEVREIGPLSKKGFYLAQDVGACIALVSV KVYYKKCWSI IENLAIFPDVTVTGSEFSSLVEVRGTCVSSAEEEEAENAPRMHCSAEGEWLVPIGKCI CKAGYQQKGDTCECK
Host	Mouse
Reactivity	Human
Isotype	IgM Kappa
Quality Control Testing	Antibody Reactive Against Recombinant Protein. Western Blot detection against Immunogen (56.32 KDa) .
Storage Buffer	In ascites fluid
Storage Instruction	Store at -20°C or lower. Aliquot to avoid repeated freezing and thawing.

Applications

- Western Blot (Recombinant protein)

[Protocol Download](#)

- ELISA

Gene Info — EPHA7

Entrez GeneID [2045](#)

GeneBank Accession# [BC027940](#)

Protein Accession# [AAH27940.1](#)

Gene Name EPHA7

Gene Alias EHK3, HEK11

Gene Description EPH receptor A7

Omim ID [602190](#)

Gene Ontology [Hyperlink](#)

Gene Summary This gene belongs to the ephrin receptor subfamily of the protein-tyrosine kinase family. EPH and EPH-related receptors have been implicated in mediating developmental events, particularly in the nervous system. Receptors in the EPH subfamily typically have a single kinase domain and an extracellular region containing a Cys-rich domain and 2 fibronectin type III repeats. The ephrin receptors are divided into 2 groups based on the similarity of their extracellular domain sequences and their affinities for binding ephrin-A and ephrin-B ligands. [provided by RefSeq]

Other Designations Eph homology kinase-3|OTTHUMP00000016875|OTTHUMP00000040586|ephrin receptor EphA7|ephrin type-A receptor 7|receptor protein-tyrosine kinase HEK11|tyrosine-protein kinase receptor EHK-3

Pathway

- [Axon guidance](#)

Disease

- [Tobacco Use Disorder](#)