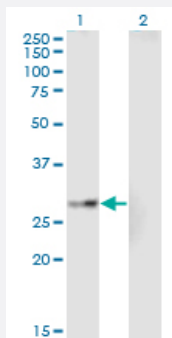


EPHA7 monoclonal antibody (M01A), clone 1G11

Catalog # H00002045-M01A

Size 200 uL

Applications

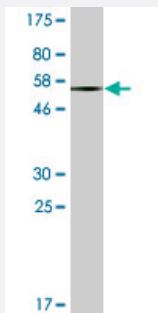


Western Blot (Transfected lysate)

Western Blot analysis of EPHA7 expression in transfected 293T cell line by EPHA7 monoclonal antibody (M01A), clone 1G11.

Lane 1: EPHA7 transfected lysate (Predicted MW: 31.8 KDa).

Lane 2: Non-transfected lysate.



Western Blot detection against Immunogen (56.32 KDa) .

Specification

Product Description	Mouse monoclonal antibody raised against a full-length recombinant EPHA7.
Immunogen	EPHA7 (AAH27940.1, 1 a.a. ~ 279 a.a) full-length recombinant protein with GST tag. MW of the GST tag alone is 26 KDa.
Sequence	MVFQTRYPSWIIICYWLLRFAHTGEAQAQKEVLLLD SKAQQTELEWISSPPNGWEEISGLDENYT PIRTYQVCQVMEPNQNNWLR TNWISKGNAQRIFVELKFTLRDCNSLPGVLGTCKETFNLYYETDY DTGRNVRENLYVKIDTIAADESFTQGD LGERKMKLNTEVREIGPLSKKGFYLA FQDVGACIALVSV KVYYKKCWSIIENLAIFPDVTVTGSEFSS LVEVRGTCVSSAEEEEAENAPRMHCSAEGEWLVPIGKCI CKAGYQQKGDTCECK
Host	Mouse

Reactivity	Human
Isotype	IgM Kappa
Quality Control Testing	Antibody Reactive Against Recombinant Protein. Western Blot detection against Immunogen (56.32 KDa) .
Storage Buffer	In ascites fluid
Storage Instruction	Store at -20°C or lower. Aliquot to avoid repeated freezing and thawing.

Applications

- Western Blot (Transfected lysate)

Western Blot analysis of EPHA7 expression in transfected 293T cell line by EPHA7 monoclonal antibody (M01A), clone 1G11.

Lane 1: EPHA7 transfected lysate (Predicted MW: 31.8 KDa).

Lane 2: Non-transfected lysate.

[Protocol Download](#)

- Western Blot (Recombinant protein)

[Protocol Download](#)

- ELISA

Gene Info — EPHA7

Entrez GeneID	2045
GeneBank Accession#	BC027940
Protein Accession#	AAH27940.1
Gene Name	EPHA7
Gene Alias	EHK3, HEK11
Gene Description	EPH receptor A7
Omim ID	602190
Gene Ontology	Hyperlink

Gene Summary

This gene belongs to the ephrin receptor subfamily of the protein-tyrosine kinase family. EPH and EPH-related receptors have been implicated in mediating developmental events, particularly in the nervous system. Receptors in the EPH subfamily typically have a single kinase domain and an extracellular region containing a Cys-rich domain and 2 fibronectin type III repeats. The ephrin receptors are divided into 2 groups based on the similarity of their extracellular domain sequences and their affinities for binding ephrin-A and ephrin-B ligands. [provided by RefSeq]

Other Designations

Eph homology kinase-3|OTTHUMP00000016875|OTTHUMP00000040586|ephrin receptor EphA7|ephrin type-A receptor 7|receptor protein-tyrosine kinase HEK11|tyrosine-protein kinase receptor EHK-3

Pathway

- [Axon guidance](#)

Disease

- [Tobacco Use Disorder](#)