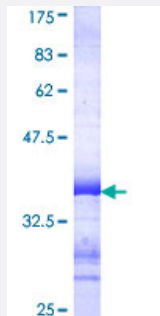


# EPHA5 (Human) Recombinant Protein (Q01)

Catalog # H00002044-Q01

Size 25 ug, 10 ug

## Applications



## Specification

<b>Product Description</b>	Human EPHA5 partial ORF ( NP_004430, 234 a.a. - 333 a.a.) recombinant protein with GST-tag at N-terminal.
<b>Sequence</b>	PSVVRHLAVFPDITTGADSSQLLEVSGSCVNHSVTDEPPKMHCSAEGEWLVPIGKCMCKAGYEE KNGTCQVCRPGFFKASPHIQSCGKCPPHSYTHEEAS
<b>Host</b>	Wheat Germ (in vitro)
<b>Theoretical MW (kDa)</b>	36.63
<b>Interspecies Antigen Sequence</b>	Mouse (93); Rat (96)
<b>Preparation Method</b>	<a href="#">in vitro wheat germ expression system</a>
<b>Purification</b>	Glutathione Sepharose 4 Fast Flow
<b>Quality Control Testing</b>	12.5% SDS-PAGE Stained with Coomassie Blue.
<b>Storage Buffer</b>	50 mM Tris-HCl, 10 mM reduced Glutathione, pH=8.0 in the elution buffer.
<b>Storage Instruction</b>	Store at -80°C. Aliquot to avoid repeated freezing and thawing.
<b>Note</b>	Best use within three months from the date of receipt of this protein.

## Applications

- Enzyme-linked Immunoabsorbent Assay
- Western Blot (Recombinant protein)
- Antibody Production
- Protein Array

## Gene Info — EPHA5

Entrez GeneID [2044](#)

GeneBank Accession# [NM\\_004439](#)

Protein Accession# [NP\\_004430](#)

Gene Name EPHA5

Gene Alias CEK7, EHK1, HEK7, TYRO4

Gene Description EPH receptor A5

Omim ID [600004](#)

Gene Ontology [Hyperlink](#)

**Gene Summary** This gene belongs to the ephrin receptor subfamily of the protein-tyrosine kinase family. EPH and EPH-related receptors have been implicated in mediating developmental events, particularly in the nervous system. Receptors in the EPH subfamily typically have a single kinase domain and an extracellular region containing a Cys-rich domain and 2 fibronectin type III repeats. The ephrin receptors are divided into 2 groups based on the similarity of their extracellular domain sequences and their affinities for binding ephrin-A and ephrin-B ligands. Two transcript variants encoding different isoforms have been found for this gene.

**Other Designations** Eph homology kinase-1|ephrin receptor EphA5|ephrin type-A receptor 5|receptor protein-tyrosine kinase HEK7|tyrosine-protein kinase receptor EHK-1

## Pathway

- [Axon guidance](#)

## Disease

- [Tobacco Use Disorder](#)