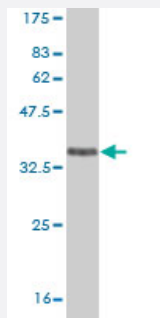


EPHA5 monoclonal antibody (M04), clone 5C8

Catalog # H00002044-M04

Size 100 ug

Applications



Western Blot detection against Immunogen (36.63 KDa) .

Specification

Product Description	Mouse monoclonal antibody raised against a partial recombinant EPHA5.
Immunogen	EPHA5 (NP_004430, 234 a.a. ~ 333 a.a) partial recombinant protein with GST tag. MW of the GST tag alone is 26 KDa.
Sequence	PSVVRHLAVFPDTITGADSSQLLEVSGSCVNHSVTDEPPKMHCSAEGEWLVPIGKCMCKAGYEEKNGTCQVCRPGFFKASPHIQSCGKCPPHSYTHEEAS
Host	Mouse
Reactivity	Human
Interspecies Antigen Sequence	Mouse (93); Rat (96)
Isotype	IgG3 Kappa
Quality Control Testing	Antibody Reactive Against Recombinant Protein. Western Blot detection against Immunogen (36.63 KDa) .
Storage Buffer	In 1x PBS, pH 7.4
Storage Instruction	Store at -20°C or lower. Aliquot to avoid repeated freezing and thawing.

Applications

- Western Blot (Recombinant protein)

[Protocol Download](#)

- ELISA

Gene Info — EPHA5

Entrez GeneID [2044](#)

GeneBank Accession# [NM_004439](#)

Protein Accession# [NP_004430](#)

Gene Name EPHA5

Gene Alias CEK7, EHK1, HEK7, TYRO4

Gene Description EPH receptor A5

Omim ID [600004](#)

Gene Ontology [Hyperlink](#)

Gene Summary This gene belongs to the ephrin receptor subfamily of the protein-tyrosine kinase family. EPH and EPH-related receptors have been implicated in mediating developmental events, particularly in the nervous system. Receptors in the EPH subfamily typically have a single kinase domain and an extracellular region containing a Cys-rich domain and 2 fibronectin type III repeats. The ephrin receptors are divided into 2 groups based on the similarity of their extracellular domain sequences and their affinities for binding ephrin-A and ephrin-B ligands. Two transcript variants encoding different isoforms have been found for this gene.

Other Designations Eph homology kinase-1|ephrin receptor EphA5|ephrin type-A receptor 5|receptor protein-tyrosine kinase HEK7|tyrosine-protein kinase receptor EHK-1

Pathway

- [Axon guidance](#)

Disease

- [Tobacco Use Disorder](#)