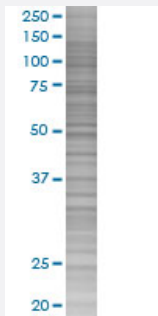


# EPHA3 293T Cell Transient Overexpression Lysate(Denatured)

Catalog # H00002042-T01

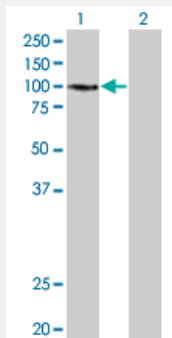
Size 100 uL

## Applications



### SDS-PAGE Gel

EPHA3 transfected lysate.



### Western Blot

Lane 1: EPHA3 transfected lysate ( 108.24 KDa)

Lane 2: Non-transfected lysate.

## Specification

Transfected Cell Line	293T
Plasmid	pCMV-EPHA3 full-length
Host	Human
Theoretical MW (kDa)	108.24
Interspecies Antigen Sequence	Mouse (96)

## Quality Control Testing

Transient overexpression cell lysate was tested with Anti-EPHA3 antibody ([H00002042-B01](#)) by Western Blots.  
 SDS-PAGE Gel  
 EPHA3 transfected lysate.  
 Western Blot  
 Lane 1: EPHA3 transfected lysate ( 108.24 KDa)  
 Lane 2: Non-transfected lysate.

## Storage Buffer

1X Sample Buffer (50 mM Tris-HCl, 2% SDS, 10% glycerol, 300 mM 2-mercaptoethanol, 0.01% Bromophenol blue)

## Storage Instruction

Store at -80°C. Aliquot to avoid repeated freezing and thawing.

## Applications

- Western Blot

## Gene Info — EPHA3

### Entrez GeneID

[2042](#)

### GeneBank Accession#

[NM\\_005233.3](#)

### Protein Accession#

-

### Gene Name

EPHA3

### Gene Alias

ETK, ETK1, HEK, HEK4, TYRO4

### Gene Description

EPH receptor A3

### Omim ID

[179611](#)

### Gene Ontology

[Hyperlink](#)

### Gene Summary

This gene belongs to the ephrin receptor subfamily of the protein-tyrosine kinase family. EPH and EPH-related receptors have been implicated in mediating developmental events, particularly in the nervous system. Receptors in the EPH subfamily typically have a single kinase domain and an extracellular region containing a Cys-rich domain and 2 fibronectin type III repeats. The ephrin receptors are divided into 2 groups based on the similarity of their extracellular domain sequences and their affinities for binding ephrin-A and ephrin-B ligands. This gene encodes a protein that binds ephrin-A ligands. Two alternatively spliced transcript variants have been described for this gene. [provided by RefSeq]

### Other Designations

TYRO4 protein tyrosine kinase|eph-like tyrosine kinase 1|ephrin receptor EphA3|human embryo kinase 1

## Pathway

- [Axon guidance](#)

## Disease

- [Genetic Predisposition to Disease](#)
- [Pancreatic cancer](#)
- [Pancreatic Neoplasms](#)