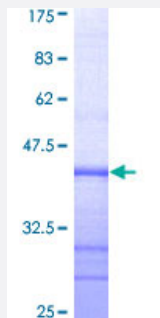


EPHA3 (Human) Recombinant Protein (Q01)

Catalog # H00002042-Q01

Size 25 ug, 10 ug

Applications



Specification

Product Description	Human EPHA3 partial ORF (AAH63282, 202 a.a. - 326 a.a.) recombinant protein with GST-tag at N-terminal.
Sequence	CPFTVKNLAMFPDTPMDSQSLVEVRGSCVNNNSKEEDPPRMYCSTEGEWLVPIGKCSCNAGYE ERGFMCQACRPGFYKALDGNMKCAKCPHSSTQEDGSMNCRCENNYFRADKDPPSMACTRP P
Host	Wheat Germ (in vitro)
Theoretical MW (kDa)	39.38
Interspecies Antigen Sequence	Mouse (95)
Preparation Method	in vitro wheat germ expression system
Purification	Glutathione Sepharose 4 Fast Flow
Quality Control Testing	12.5% SDS-PAGE Stained with Coomassie Blue.
Storage Buffer	50 mM Tris-HCl, 10 mM reduced Glutathione, pH=8.0 in the elution buffer.
Storage Instruction	Store at -80°C. Aliquot to avoid repeated freezing and thawing.
Note	Best use within three months from the date of receipt of this protein.

Applications

- Enzyme-linked Immunoabsorbent Assay
- Western Blot (Recombinant protein)
- Antibody Production
- Protein Array

Gene Info — EPHA3

Entrez GeneID [2042](#)

GeneBank Accession# [BC063282](#)

Protein Accession# [AAH63282](#)

Gene Name EPHA3

Gene Alias ETK, ETK1, HEK, HEK4, TYRO4

Gene Description EPH receptor A3

Omim ID [179611](#)

Gene Ontology [Hyperlink](#)

Gene Summary This gene belongs to the ephrin receptor subfamily of the protein-tyrosine kinase family. EPH and EPH-related receptors have been implicated in mediating developmental events, particularly in the nervous system. Receptors in the EPH subfamily typically have a single kinase domain and an extracellular region containing a Cys-rich domain and 2 fibronectin type III repeats. The ephrin receptors are divided into 2 groups based on the similarity of their extracellular domain sequences and their affinities for binding ephrin-A and ephrin-B ligands. This gene encodes a protein that binds ephrin-A ligands. Two alternatively spliced transcript variants have been described for this gene. [provided by RefSeq]

Other Designations TYRO4 protein tyrosine kinase|eph-like tyrosine kinase 1|ephrin receptor EphA3|human embryo kinase 1

Pathway

- [Axon guidance](#)

Disease

- [Genetic Predisposition to Disease](#)
- [Pancreatic cancer](#)
- [Pancreatic Neoplasms](#)