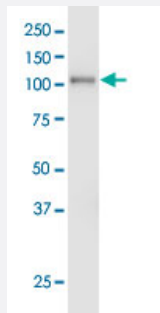


EPHA3 monoclonal antibody (M01), clone 3A12

Catalog # H00002042-M01

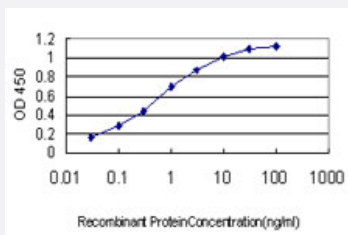
Size 100 ug

Applications



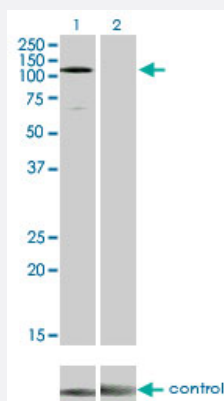
Western Blot (Tissue lysate)

EPHA3 monoclonal antibody (M01), clone 3A12. Western Blot analysis of EPHA3 expression in human spleen.



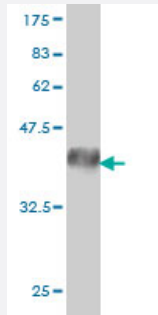
Sandwich ELISA (Recombinant protein)

Detection limit for recombinant GST tagged EPHA3 is approximately 0.03ng/ml as a capture antibody.



RNAi Knockdown (Antibody validated)

Western blot analysis of EPHA3 over-expressed 293 cell line, cotransfected with EPHA3 Validated Chimera RNAi (Cat # H00002042-R01V) (Lane 2) or non-transfected control (Lane 1). Blot probed with EPHA3 monoclonal antibody (M01) clone 3A12 (Cat # H00002042-M01). GAPDH (36.1 kDa) used as specificity and loading control.



Western Blot detection against Immunogen (39.38 KDa) .

Specification

Product Description	Mouse monoclonal antibody raised against a partial recombinant EPHA3.
Immunogen	EPHA3 (AAH63282, 202 a.a. ~ 326 a.a) partial recombinant protein with GST tag. MW of the GST tag alone is 26 KDa.
Sequence	CPFTVKNLAMFPDTPMDSQSLVEVRGSCVNNSEEDPPRMYCSTEGEWLVPIGKCSCNAGYE ERGFMCQACRPGFYKALDGNMKCAKCPPHSSTQEDGSMNCRCENNYFRADKDPSPMACTRP P
Host	Mouse
Reactivity	Human
Interspecies Antigen Sequence	Mouse (95)
Isotype	IgG1 Kappa
Quality Control Testing	Antibody Reactive Against Recombinant Protein. Western Blot detection against Immunogen (39.38 KDa) .
Storage Buffer	In 1x PBS, pH 7.4
Storage Instruction	Store at -20°C or lower. Aliquot to avoid repeated freezing and thawing.

Applications

- Western Blot (Tissue lysate)

EPHA3 monoclonal antibody (M01), clone 3A12. Western Blot analysis of EPHA3 expression in human spleen.

[Protocol Download](#)

- Western Blot (Recombinant protein)

[Protocol Download](#)

- Sandwich ELISA (Recombinant protein)

Detection limit for recombinant GST tagged EPHA3 is approximately 0.03ng/ml as a capture antibody.

[Protocol Download](#)

- ELISA

- RNAi Knockdown (Antibody validated)

Western blot analysis of EPHA3 over-expressed 293 cell line, cotransfected with EPHA3 Validated Chimera RNAi (Cat # H00002042-R01V) (Lane 2) or non-transfected control (Lane 1). Blot probed with EPHA3 monoclonal antibody (M01) clone 3A12 (Cat # H00002042-M01). GAPDH (36.1 kDa) used as specificity and loading control.

[Protocol Download](#)

Gene Info — EPHA3

Entrez GeneID [2042](#)

GeneBank Accession# [BC063282](#)

Protein Accession# [AAH63282](#)

Gene Name EPHA3

Gene Alias ETK, ETK1, HEK, HEK4, TYRO4

Gene Description EPH receptor A3

Omim ID [179611](#)

Gene Ontology [Hyperlink](#)

Gene Summary

This gene belongs to the ephrin receptor subfamily of the protein-tyrosine kinase family. EPH and EPH-related receptors have been implicated in mediating developmental events, particularly in the nervous system. Receptors in the EPH subfamily typically have a single kinase domain and an extracellular region containing a Cys-rich domain and 2 fibronectin type III repeats. The ephrin receptors are divided into 2 groups based on the similarity of their extracellular domain sequences and their affinities for binding ephrin-A and ephrin-B ligands. This gene encodes a protein that binds ephrin-A ligands. Two alternatively spliced transcript variants have been described for this gene. [provided by RefSeq

Other Designations

TYRO4 protein tyrosine kinase|eph-like tyrosine kinase 1|ephrin receptor EphA3|human embryo kinase 1

Publication Reference

- [EPHA3 regulates the multidrug resistance of small cell lung cancer via the PI3K/BMX/STAT3 sign.](#)

Peng J, Wang Q, Liu H, Ye M, Wu X, Guo L.

Tumour Biology 2016 Sep; 37(9):11959.

Application: WB-Tr, Human, H69, H69AR, H446, H146, H1688 cells

Pathway

- [Axon guidance](#)

Disease

- [Genetic Predisposition to Disease](#)
- [Pancreatic cancer](#)
- [Pancreatic Neoplasms](#)