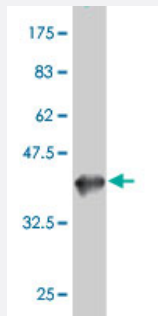


# EPHA1 polyclonal antibody (A01)

Catalog # H00002041-A01

Size 50 uL

## Applications



Western Blot detection against Immunogen (37.88 KDa) .

## Specification

<b>Product Description</b>	Mouse polyclonal antibody raised against a partial recombinant EPHA1.
<b>Immunogen</b>	EPHA1 (NP_005223, 394 a.a. ~ 500 a.a) partial recombinant protein with GST tag.
<b>Sequence</b>	PGARGLTTPAVHVNGLEPYANYTFNVEAQNGVSGLGSSGHASTSVSISMGHAESLSGLSLRLVKK EPRQLELTWAGSRPRSPGANLTYELHVLNQDEERYQM/VLEPR
<b>Host</b>	Mouse
<b>Reactivity</b>	Human
<b>Interspecies Antigen Sequence</b>	Mouse (79); Rat (74)
<b>Quality Control Testing</b>	Antibody Reactive Against Recombinant Protein. Western Blot detection against Immunogen (37.88 KDa) .
<b>Storage Buffer</b>	50 % glycerol
<b>Storage Instruction</b>	Store at -20°C or lower. Aliquot to avoid repeated freezing and thawing.

## Applications

- Western Blot (Recombinant protein)

[Protocol Download](#)

- ELISA

## Gene Info — EPHA1

Entrez GeneID [2041](#)

GeneBank Accession# [NM\\_005232](#)

Protein Accession# [NP\\_005223](#)

Gene Name EPHA1

Gene Alias EPH, EPHT, EPHT1, MGC163163

Gene Description EPH receptor A1

Omim ID [179610](#)

Gene Ontology [Hyperlink](#)

**Gene Summary** This gene belongs to the ephrin receptor subfamily of the protein-tyrosine kinase family. EPH and EPH-related receptors have been implicated in mediating developmental events, particularly in the nervous system. Receptors in the EPH subfamily typically have a single kinase domain and an extracellular region containing a Cys-rich domain and 2 fibronectin type III repeats. The ephrin receptors are divided into 2 groups based on the similarity of their extracellular domain sequences and their affinities for binding ephrin-A and ephrin-B ligands. This gene is expressed in some human cancer cell lines and has been implicated in carcinogenesis. [provided by RefSeq]

**Other Designations** eph tyrosine kinase 1|ephrin receptor EphA1|ephrin type-A receptor 1|erythropoietin-producing hepatoma amplified sequence|oncogene EPH|soluble EPHA1 variant 1|soluble EPHA1 variant 2|tyrosine-protein kinase receptor EPH

## Pathway

- [Axon guidance](#)

## Disease

- [Cardiovascular Diseases](#)

- [Diabetes Mellitus](#)
- [Edema](#)