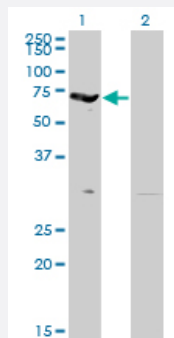


# EPB42 monoclonal antibody (M01), clone 2G12

Catalog # H00002038-M01

Size 100 ug

## Applications

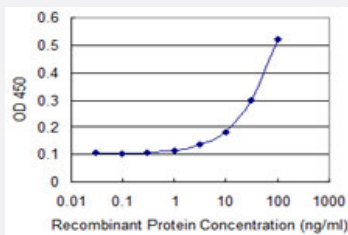


### Western Blot (Transfected lysate)

Western Blot analysis of EPB42 expression in transfected 293T cell line by EPB42 monoclonal antibody (M01), clone 2G12.

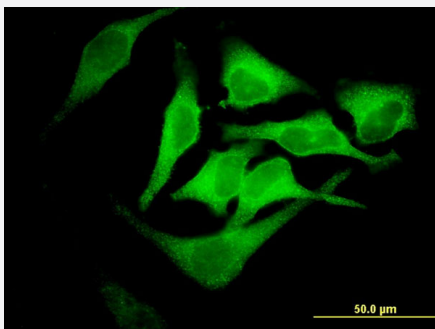
Lane 1: EPB42 transfected lysate(69.5 kDa).

Lane 2: Non-transfected lysate.



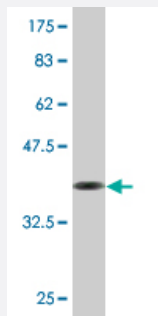
### Sandwich ELISA (Recombinant protein)

Detection limit for recombinant GST tagged EPB42 is 1 ng/ml as a capture antibody.



### Immunofluorescence

Immunofluorescence of monoclonal antibody to EPB42 on HeLa cell . [antibody concentration 10 ug/ml]



Western Blot detection against Immunogen (36.63 KDa) .

## Specification

<b>Product Description</b>	Mouse monoclonal antibody raised against a partial recombinant EPB42.
<b>Immunogen</b>	EPB42 (NP_000110.1, 623 a.a. ~ 721 a.a) partial recombinant protein with GST tag. MW of the GST tag alone is 26 KDa.
<b>Sequence</b>	KMPEKAEQYQPLTASVSLQNSLDAPMEDCVISILGRGLIHRERSYRFRSVWPENTMCAKFQFTPT HVGLQRLTVEVDCNMFQNLNYSVTTVVAPELSA
<b>Host</b>	Mouse
<b>Reactivity</b>	Human
<b>Interspecies Antigen Sequence</b>	Mouse (66); Rat (69)
<b>Isotype</b>	IgG2a Kappa
<b>Quality Control Testing</b>	Antibody Reactive Against Recombinant Protein. Western Blot detection against Immunogen (36.63 KDa) .
<b>Storage Buffer</b>	In 1x PBS, pH 7.4
<b>Storage Instruction</b>	Store at -20°C or lower. Aliquot to avoid repeated freezing and thawing.

## Applications

### ● Western Blot (Transfected lysate)

Western Blot analysis of EPB42 expression in transfected 293T cell line by EPB42 monoclonal antibody (M01), clone 2G12.

Lane 1: EPB42 transfected lysate(69.5 KDa).

Lane 2: Non-transfected lysate.

[Protocol Download](#)

- Western Blot (Recombinant protein)

[Protocol Download](#)

- Sandwich ELISA (Recombinant protein)

Detection limit for recombinant GST tagged EPB42 is 1 ng/ml as a capture antibody.

[Protocol Download](#)

- ELISA

- Immunofluorescence

Immunofluorescence of monoclonal antibody to EPB42 on HeLa cell . [antibody concentration 10 ug/ml]

## Gene Info — EPB42

**Entrez GeneID** [2038](#)

**GeneBank Accession#** [NM\\_000119](#)

**Protein Accession#** [NP\\_000110.1](#)

**Gene Name** EPB42

**Gene Alias** MGC116735, MGC116737, PA

**Gene Description** erythrocyte membrane protein band 4.2

**Omim ID** [177070](#)

**Gene Ontology** [Hyperlink](#)

**Gene Summary** Erythrocyte membrane protein band 4.2 is an ATP-binding protein which may regulate the association of protein 3 with ankyrin. It probably has a role in erythrocyte shape and mechanical property regulation. Mutations in the EPB42 gene are associated with recessive spherocytic elliptocytosis and recessively transmitted hereditary hemolytic anemia. Alternatively spliced transcript variants encoding different isoforms have been found for this gene. [provided by RefSeq]

**Other Designations** Erythrocyte surface protein band 4.2