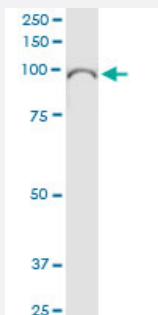


# EPB41L1 (Human) IP-WB Antibody Pair

Catalog # H00002036-PW1

Size 1 Set

## Applications



Immunoprecipitation of EPB41L1 transfected lysate using rabbit polyclonal anti-EPB41L1 and Protein A Magnetic Bead ([U0007](#)), and immunoblotted with mouse purified polyclonal anti-EPB41L1.

## Specification

<b>Product Description</b>	This IP-WB antibody pair set comes with one antibody for immunoprecipitation and another to detect the precipitated protein in western blot.
<b>Reactivity</b>	Human
<b>Quality Control Testing</b>	Immunoprecipitation-Western Blot (IP-WB) Immunoprecipitation of EPB41L1 transfected lysate using rabbit polyclonal anti-EPB41L1 and Protein A Magnetic Bead ( <a href="#">U0007</a> ), and immunoblotted with mouse purified polyclonal anti-EPB41L1.
<b>Supplied Product</b>	Antibody pair set content: 1. Antibody pair for IP: rabbit polyclonal anti-EPB41L1 (300 ul) 2. Antibody pair for WB: mouse purified polyclonal anti-EPB41L1 (50 ug)
<b>Storage Instruction</b>	Store reagents of the antibody pair set at -20°C or lower. Please aliquot to avoid repeated freeze thaw cycle. Reagents should be returned to -20°C storage immediately after use.

## Applications

- Immunoprecipitation-Western Blot

[Protocol Download](#)

## Gene Info — EPB41L1

Entrez GeneID	<a href="#">2036</a>
Gene Name	EPB41L1
Gene Alias	4.1N, DKFZp686H17242, KIAA0338, MGC11072
Gene Description	erythrocyte membrane protein band 4.1-like 1
Omim ID	<a href="#">602879</a>
Gene Ontology	<a href="#">Hyperlink</a>
Gene Summary	Erythrocyte membrane protein band 4.1 (EPB41) is a multifunctional protein that mediates interactions between the erythrocyte cytoskeleton and the overlying plasma membrane. The protein encoded by this gene is a neuronally-enriched protein that is structurally similar to EPB41. The encoded protein binds and stabilizes D2 and D3 dopamine receptors at the neuronal plasma membrane. Multiple transcript variants encoding different isoforms have been found for this gene, but the full-length nature of only two of them has been determined. [provided by RefSeq]
Other Designations	OTTHUMP00000030825 OTTHUMP00000030829 neuron-type nonerythroid protein 4.1 neuronal protein 4.1

## Pathway

- [Tight junction](#)

## Disease

- [Anorexia Nervosa](#)
- [Bulimia](#)
- [Genetic Predisposition to Disease](#)