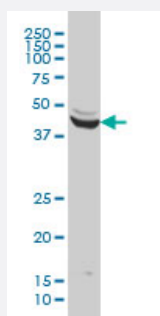


ENO3 monoclonal antibody (M01A), clone 5D1

Catalog # H00002027-M01A

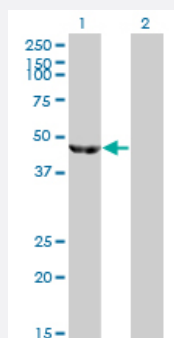
Size 200 uL

Applications



Western Blot (Cell lysate)

ENO3 monoclonal antibody (M01A), clone 5D1 Western Blot analysis of ENO3 expression in HeLa (Cat # L013V1).

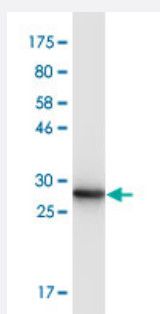


Western Blot (Transfected lysate)

Western Blot analysis of ENO3 expression in transfected 293T cell line by ENO3 monoclonal antibody (M01A), clone 5D1.

Lane 1: ENO3 transfected lysate(46.9 KDa).

Lane 2: Non-transfected lysate.



Western Blot detection against Immunogen (31.24 KDa) .

Specification

Product Description

Mouse monoclonal antibody raised against a partial recombinant ENO3.

Immunogen	ENO3 (NP_001967, 228 a.a. ~ 277 a.a) partial recombinant protein with GST tag. MW of the GST tag alone is 26 KDa.
Sequence	KTAIQAAGYPDKVVIGMDVAASEFYRNGKYDLDFKSPDDPARHITGEKLG
Host	Mouse
Reactivity	Human
Isotype	IgG2a Kappa
Quality Control Testing	Antibody Reactive Against Recombinant Protein. Western Blot detection against Immunogen (31.24 KDa) .
Storage Buffer	In ascites fluid
Storage Instruction	Store at -20°C or lower. Aliquot to avoid repeated freezing and thawing.

Applications

- Western Blot (Cell lysate)

ENO3 monoclonal antibody (M01A), clone 5D1 Western Blot analysis of ENO3 expression in HeLa (Cat # L013V1).

[Protocol Download](#)

- Western Blot (Transfected lysate)

Western Blot analysis of ENO3 expression in transfected 293T cell line by ENO3 monoclonal antibody (M01A), clone 5D1.

Lane 1: ENO3 transfected lysate(46.9 KDa).

Lane 2: Non-transfected lysate.

[Protocol Download](#)

- Western Blot (Recombinant protein)

[Protocol Download](#)

- ELISA

Gene Info — ENO3

Entrez GeneID [2027](#)

GeneBank Accession# [NM_001976](#)

Protein Accession#	NP_001967
Gene Name	ENO3
Gene Alias	MSE
Gene Description	enolase 3 (beta, muscle)
Omim ID	131370
Gene Ontology	Hyperlink
Gene Summary	This gene encodes one of the three enolase isoenzymes found in mammals. This isoenzyme, a homodimer, is found in skeletal muscle cells in the adult. A switch from alpha enolase to beta enolase occurs in muscle tissue during development in rodents. Mutations in this gene can be associated with metabolic myopathies that may result from decreased stability of the enzyme. Two transcripts have been identified for this gene that differ only in their 5' UTR. [provided by RefSeq]
Other Designations	2-phospho-D-glycerate hydrolyase ENO3, muscle enolase 3 beta OTTHUMP00000125242 beta enolase enolase 3 enolase-3, beta, muscle muscle specific enolase skeletal muscle enolase

Pathway

- [Biosynthesis of alkaloids derived from histidine and purine](#)
- [Biosynthesis of alkaloids derived from ornithine](#)
- [Biosynthesis of alkaloids derived from shikimate pathway](#)
- [Biosynthesis of alkaloids derived from terpenoid and polyketide](#)
- [Biosynthesis of phenylpropanoids](#)
- [Biosynthesis of plant hormones](#)
- [Biosynthesis of terpenoids and steroids](#)
- [Glycolysis / Gluconeogenesis](#)
- [Metabolic pathways](#)
- [RNA degradation](#)

Disease

- [Muscular Dystrophies](#)