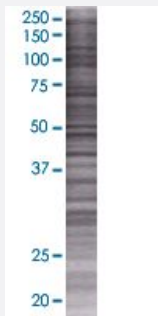


ENDO G 293T Cell Transient Overexpression Lysate(Denatured)

Catalog # H00002021-T01

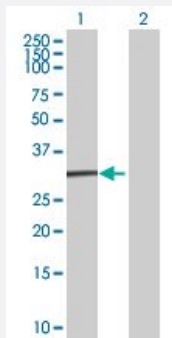
Size 100 uL

Applications



SDS-PAGE Gel

ENDO G transfected lysate.



Western Blot

Lane 1: ENDO G transfected lysate (27.39 KDa)

Lane 2: Non-transfected lysate.

Specification

Transfected Cell Line	293T
Plasmid	pCMV-ENDO G full-length
Host	Human
Theoretical MW (kDa)	27.39
Interspecies Antigen Sequence	Mouse (93); Rat (92)

Quality Control Testing

Transient overexpression cell lysate was tested with Anti-ENDOG antibody ([H00002021-B01](#)) by Western Blots.
SDS-PAGE Gel
ENDOG transfected lysate.
Western Blot
Lane 1: ENDOG transfected lysate (27.39 KDa)
Lane 2: Non-transfected lysate.

Storage Buffer

1X Sample Buffer (50 mM Tris-HCl, 2% SDS, 10% glycerol, 300 mM 2-mercaptoethanol, 0.01% Bromophenol blue)

Storage Instruction

Store at -80°C. Aliquot to avoid repeated freezing and thawing.

Applications

- Western Blot

Gene Info — ENDOG

Entrez GeneID

[2021](#)

GeneBank Accession#

[BC004922](#)

Protein Accession#

[AAH04922](#)

Gene Name

ENDOG

Gene Alias

FLJ27463

Gene Description

endonuclease G

Omim ID

[600440](#)

Gene Ontology

[Hyperlink](#)

Gene Summary

The protein encoded by this gene is a nuclear encoded endonuclease that is localized in the mitochondrion. The encoded protein is widely distributed among animals and cleaves DNA at GC tracts. This protein is capable of generating the RNA primers required by DNA polymerase gamma to initiate replication of mitochondrial DNA. [provided by RefSeq]

Other Designations

OTTHUMP00000022301

Pathway

- [Apoptosis](#)