

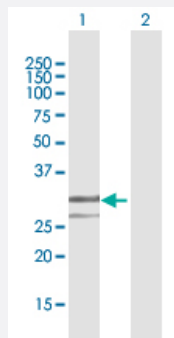
MaxPab®

ENDO G purified MaxPab mouse polyclonal antibody (B02P)

Catalog # H00002021-B02P

Size 50 ug

Applications



Western Blot (Transfected lysate)

Western Blot analysis of ENDO G expression in transfected 293T cell line ([H00002021-T03](#)) by ENDO G MaxPab polyclonal antibody.

Lane 1: ENDO G transfected lysate(27.39 KDa).

Lane 2: Non-transfected lysate.

Specification

Product Description	Mouse polyclonal antibody raised against a full-length human ENDO G protein.
Immunogen	ENDO G (AAH04922.1, 50 a.a. ~ 297 a.a) full-length human protein.
Sequence	ELPPVPGGPRGPGELAKYGLPGLAQLKSRESYVLCYDPRTRGALWVVEQLRPERLRGDGDRRE CDFREDDSVHAYHRATNADYRGSGFDRGHLAAAANHRWSQKAMDDTFYLSNVAPQVPHLNQN AWNNLEKYSRSLTRSYQNVYVCTGPLFLPRTEADGKSYYKYQVIGKNHVAVPHTFFKVLILEAAGG QIELRTYVMPNAPVDEAIPLERFLVPIESIERASGLLFVFNILARAGSLKAITAGSK
Host	Mouse
Reactivity	Human
Interspecies Antigen Sequence	Mouse (93); Rat (92)
Quality Control Testing	Antibody reactive against mammalian transfected lysate.
Storage Buffer	In 1x PBS, pH 7.4
Storage Instruction	Store at -20°C or lower. Aliquot to avoid repeated freezing and thawing.

Applications

- Western Blot (Transfected lysate)

Western Blot analysis of ENDOG expression in transfected 293T cell line ([H00002021-T03](#)) by ENDOG MaxPab polyclonal antibody.

Lane 1: ENDOG transfected lysate(27.39 KDa).

Lane 2: Non-transfected lysate.

[Protocol Download](#)

Gene Info — ENDOG

Entrez GeneID [2021](#)

GeneBank Accession# [BC004922](#)

Protein Accession# [AAH04922.1](#)

Gene Name ENDOG

Gene Alias FLJ27463

Gene Description endonuclease G

Omim ID [600440](#)

Gene Ontology [Hyperlink](#)

Gene Summary The protein encoded by this gene is a nuclear encoded endonuclease that is localized in the mitochondrion. The encoded protein is widely distributed among animals and cleaves DNA at GC tracts. This protein is capable of generating the RNA primers required by DNA polymerase gamma to initiate replication of mitochondrial DNA. [provided by RefSeq]

Other Designations OTTHUMP00000022301

Pathway

- [Apoptosis](#)