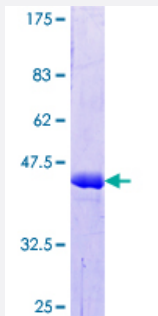


# CTTN (Human) Recombinant Protein (Q01)

Catalog # H00002017-Q01

Size 10 ug, 25 ug

## Applications



## Specification

<b>Product Description</b>	Human CTTN partial ORF ( NP_005222.2, 341 a.a. - 450 a.a.) recombinant protein with GST-tag at N-terminal.
<b>Sequence</b>	EAVTSKTSNIRANFENLAKEKEQEDRRKAEAEARAQRMAREQEEARRKLEEQARAKTQTPPV SPAPQPTTEERLPSSPVYEDAASFKAELSYRGPVSGTEPEPVYSMEA
<b>Host</b>	Wheat Germ (in vitro)
<b>Theoretical MW (kDa)</b>	37.84
<b>Preparation Method</b>	<a href="#">in vitro wheat germ expression system</a>
<b>Purification</b>	Glutathione Sepharose 4 Fast Flow
<b>Quality Control Testing</b>	12.5% SDS-PAGE Stained with Coomassie Blue.
<b>Storage Buffer</b>	50 mM Tris-HCl, 10 mM reduced Glutathione, pH=8.0 in the elution buffer.
<b>Storage Instruction</b>	Store at -80°C. Aliquot to avoid repeated freezing and thawing.
<b>Note</b>	Best use within three months from the date of receipt of this protein.

## Applications

- Enzyme-linked Immunoabsorbent Assay
- Western Blot (Recombinant protein)
- Antibody Production
- Protein Array

## Gene Info — CTTN

Entrez GeneID [2017](#)

GeneBank Accession# [NM\\_005231](#)

Protein Accession# [NP\\_005222.2](#)

Gene Name CTTN

Gene Alias EMS1, FLJ34459

Gene Description cortactin

Omim ID [164765](#)

Gene Ontology [Hyperlink](#)

**Gene Summary** This gene is overexpressed in breast cancer and squamous cell carcinomas of the head and neck. The encoded protein is localized in the cytoplasm and in areas of the cell-substratum contacts. This gene has two roles: (1) regulating the interactions between components of adherens-type junctions and (2) organizing the cytoskeleton and cell adhesion structures of epithelia and carcinoma cells. During apoptosis, the encoded protein is degraded in a caspase-dependent manner. The aberrant regulation of this gene contributes to tumor cell invasion and metastasis. Two splice variants that encode different isoforms have been identified for this gene. [provided by RefSeq]

**Other Designations** 1110020L01Rik|ems1 sequence (mammary tumor and squamous cell carcinoma-associated (p80/85 src substrate)|oncogene EMS1

## Pathway

- [Pathogenic Escherichia coli infection - EHEC](#)
- [Tight junction](#)

## Disease

- [Asthma](#)
- [Genetic Predisposition to Disease](#)