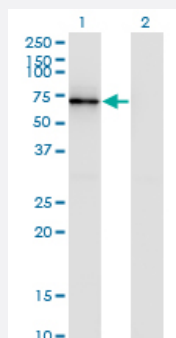


CTTN monoclonal antibody (M01), clone 2B5

Catalog # H00002017-M01

Size 100 ug

Applications

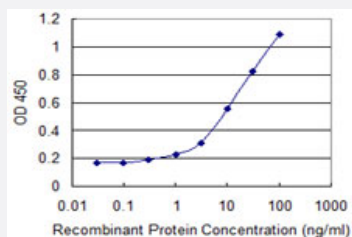


Western Blot (Transfected lysate)

Western Blot analysis of CTTN expression in transfected 293T cell line by CTTN monoclonal antibody (M01), clone 2B5.

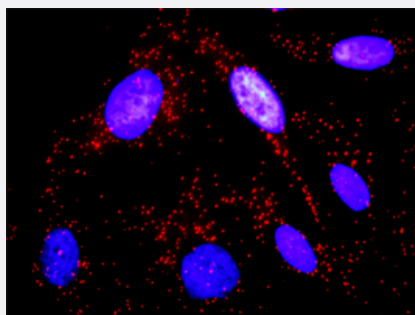
Lane 1: CTTN transfected lysate (Predicted MW: 57.5 kDa).

Lane 2: Non-transfected lysate.



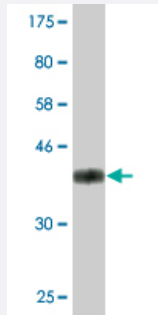
Sandwich ELISA (Recombinant protein)

Detection limit for recombinant GST tagged CTTN is 0.3 ng/ml as a capture antibody.



In situ Proximity Ligation Assay (Cell)

Proximity Ligation Analysis of protein-protein interactions between SYK and CTTN. HeLa cells were stained with anti-SYK rabbit purified polyclonal 1:1200 and anti-CTTN mouse monoclonal antibody 1:50. Each red dot represents the detection of protein-protein interaction complex, and nuclei were counterstained with DAPI (blue).



Western Blot detection against Immunogen (37.84 KDa) .

Specification

Product Description	Mouse monoclonal antibody raised against a partial recombinant CTTN.
Immunogen	CTTN (NP_005222.2, 341 a.a. ~ 450 a.a) partial recombinant protein with GST tag. MW of the GST tag alone is 26 KDa.
Sequence	EAVTSKTSNIRANFENLAKEKEQEDRRKAEAEARAQRMARERQEQEEARRKLEEQARAKTQTPPV SPAPQPTEERLPSSPVYEDAASFKAELSYRGPVSGTEPEPVYSMEA
Host	Mouse
Reactivity	Human
Isotype	IgG2a Kappa
Quality Control Testing	Antibody Reactive Against Recombinant Protein. Western Blot detection against Immunogen (37.84 KDa) .
Storage Buffer	In 1x PBS, pH 7.4
Storage Instruction	Store at -20°C or lower. Aliquot to avoid repeated freezing and thawing.

Applications

- Western Blot (Transfected lysate)

Western Blot analysis of CTTN expression in transfected 293T cell line by CTTN monoclonal antibody (M01), clone 2B5.

Lane 1: CTTN transfected lysate (Predicted MW: 57.5 KDa).

Lane 2: Non-transfected lysate.

[Protocol Download](#)

- Western Blot (Recombinant protein)

[Protocol Download](#)

- Sandwich ELISA (Recombinant protein)

Detection limit for recombinant GST tagged CTTN is 0.3 ng/ml as a capture antibody.

[Protocol Download](#)

- ELISA

- *In situ* Proximity Ligation Assay (Cell)

Proximity Ligation Analysis of protein-protein interactions between SYK and CTTN. HeLa cells were stained with anti-SYK rabbit purified polyclonal 1:1200 and anti-CTTN mouse monoclonal antibody 1:50. Each red dot represents the detection of protein-protein interaction complex, and nuclei were counterstained with DAPI (blue).

Gene Info — CTTN

Entrez GeneID [2017](#)

GeneBank Accession# [NM_005231](#)

Protein Accession# [NP_005222.2](#)

Gene Name CTTN

Gene Alias EMS1, FLJ34459

Gene Description cortactin

Omim ID [164765](#)

Gene Ontology [Hyperlink](#)

Gene Summary This gene is overexpressed in breast cancer and squamous cell carcinomas of the head and neck. The encoded protein is localized in the cytoplasm and in areas of the cell-substratum contacts. This gene has two roles: (1) regulating the interactions between components of adherens-type junctions and (2) organizing the cytoskeleton and cell adhesion structures of epithelia and carcinoma cells. During apoptosis, the encoded protein is degraded in a caspase-dependent manner. The aberrant regulation of this gene contributes to tumor cell invasion and metastasis. Two splice variants that encode different isoforms have been identified for this gene. [provided by RefSeq]

Other Designations 110020L01Rik|ems1 sequence (mammary tumor and squamous cell carcinoma-associated (p80/85 src substrate))|oncogene EMS1

Pathway

- [Pathogenic Escherichia coli infection - EHEC](#)

- [Tight junction](#)

Disease

- [Asthma](#)
- [Genetic Predisposition to Disease](#)