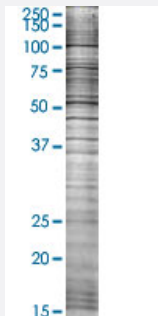


EMR1 293T Cell Transient Overexpression Lysate(Denatured)

Catalog # H00002015-T02

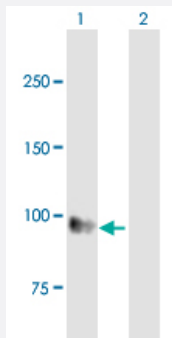
Size 100 uL

Applications



SDS-PAGE Gel

EMR1 transfected lysate.



Western Blot

Lane 1: EMR1 transfected lysate (90.4 KDa)

Lane 2: Non-transfected lysate.

Specification

Transfected Cell Line 293T

Plasmid pCMV-EMR1 full-length

Host Human

Theoretical MW (kDa) 90.4

Quality Control Testing Transient overexpression cell lysate was tested with Anti-EMR1 antibody ([H00002015-B01P](#)) by Western Blots.
 SDS-PAGE Gel
 EMR1 transfected lysate.
 Western Blot
 Lane 1: EMR1 transfected lysate (90.4 KDa)
 Lane 2: Non-transfected lysate.

Storage Buffer

1X Sample Buffer (50 mM Tris-HCl, 2% SDS, 10% glycerol, 300 mM 2-mercaptoethanol, 0.01% Bromophenol blue)

Storage Instruction

Store at -80°C. Aliquot to avoid repeated freezing and thawing.

Applications

- Western Blot

Gene Info — EMR1

Entrez GeneID[2015](#)**GeneBank Accession#**[BC059395](#)**Protein Accession#**[AAH59395](#)**Gene Name**

EMR1

Gene Alias

TM7LN3

Gene Description

egf-like module containing, mucin-like, hormone receptor-like 1

Omim ID[600493](#)**Gene Ontology**[Hyperlink](#)**Gene Summary**

This gene encodes a protein that has a domain resembling seven transmembrane G protein-coupled hormone receptors (7TM receptors) at its C-terminus. The N-terminus of the encoded protein has six EGF-like modules, separated from the transmembrane segments by a serine/threonine-rich domain, a feature reminiscent of mucin-like, single-span, integral membrane glycoproteins with adhesive properties. [provided by RefSeq]

Other Designations

egf-like module containing, mucin-like, hormone receptor-like sequence 1

Disease

- [Genetic Predisposition to Disease](#)
- [Hyperparathyroidism](#)