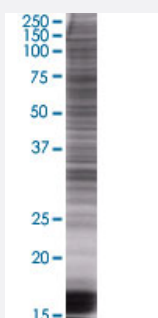


# EMR1 293T Cell Transient Overexpression Lysate(Denatured)

Catalog # H00002015-T01

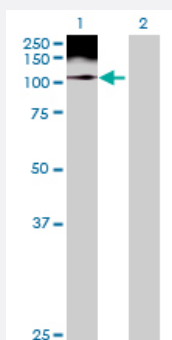
Size 100 uL

## Applications



### SDS-PAGE Gel

EMR1 transfected lysate.



### Western Blot

Lane 1: EMR1 transfected lysate ( 90.42 KDa)

Lane 2: Non-transfected lysate.

## Specification

**Transfected Cell Line** 293T

**Plasmid** pCMV-EMR1 full-length

**Host** Human

**Theoretical MW (kDa)** 90.42

**Quality Control Testing** Transient overexpression cell lysate was tested with Anti-EMR1 antibody ([H00002015-B01](#)) by Western Blots.  
 SDS-PAGE Gel  
 EMR1 transfected lysate.  
 Western Blot  
 Lane 1: EMR1 transfected lysate ( 90.42 KDa)  
 Lane 2: Non-transfected lysate.

**Storage Buffer**

1X Sample Buffer (50 mM Tris-HCl, 2% SDS, 10% glycerol, 300 mM 2-mercaptoethanol, 0.01% Bromophenol blue)

**Storage Instruction**

Store at -80°C. Aliquot to avoid repeated freezing and thawing.

## Applications

- Western Blot

## Gene Info — EMR1

**Entrez GeneID**[2015](#)**GeneBank Accession#**[BC059395](#)**Protein Accession#**[AAH59395](#)**Gene Name**

EMR1

**Gene Alias**

TM7LN3

**Gene Description**

egf-like module containing, mucin-like, hormone receptor-like 1

**Omim ID**[600493](#)**Gene Ontology**[Hyperlink](#)**Gene Summary**

This gene encodes a protein that has a domain resembling seven transmembrane G protein-coupled hormone receptors (7TM receptors) at its C-terminus. The N-terminus of the encoded protein has six EGF-like modules, separated from the transmembrane segments by a serine/threonine-rich domain, a feature reminiscent of mucin-like, single-span, integral membrane glycoproteins with adhesive properties. [provided by RefSeq]

**Other Designations**

egf-like module containing, mucin-like, hormone receptor-like sequence 1

## Disease

- [Genetic Predisposition to Disease](#)
- [Hyperparathyroidism](#)