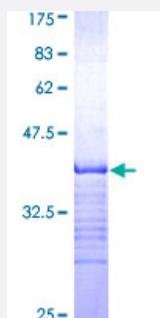


# MARK2 (Human) Recombinant Protein (Q01)

Catalog # H00002011-Q01

Size 25 ug, 10 ug

## Applications



## Specification

<b>Product Description</b>	Human MARK2 partial ORF ( AAH08771, 401 a.a. - 500 a.a.) recombinant protein with GST-tag at N-terminal.
<b>Sequence</b>	QAAGPAIPTSNSYSKKTQSNNAENKRPEEDRESGRKASSTAKVPASPLPGLERKKTTPSTNS VLSTSTNRSRNSPLLERASLGQASIQNGKDSLTPMG
<b>Host</b>	Wheat Germ (in vitro)
<b>Theoretical MW (kDa)</b>	36.63
<b>Interspecies Antigen Sequence</b>	Mouse (93); Rat (94)
<b>Preparation Method</b>	<a href="#">in vitro wheat germ expression system</a>
<b>Purification</b>	Glutathione Sepharose 4 Fast Flow
<b>Quality Control Testing</b>	12.5% SDS-PAGE Stained with Coomassie Blue.
<b>Storage Buffer</b>	50 mM Tris-HCl, 10 mM reduced Glutathione, pH=8.0 in the elution buffer.
<b>Storage Instruction</b>	Store at -80°C. Aliquot to avoid repeated freezing and thawing.
<b>Note</b>	Best use within three months from the date of receipt of this protein.

## Applications

- Enzyme-linked Immunoabsorbent Assay
- Western Blot (Recombinant protein)
- Antibody Production
- Protein Array

## Gene Info — MARK2

Entrez GeneID	<a href="#">2011</a>
GeneBank Accession#	<a href="#">BC008771</a>
Protein Accession#	<a href="#">AAH08771</a>
Gene Name	MARK2
Gene Alias	EMK1, MGC99619, PAR-1, Par1b
Gene Description	MAP/microtubule affinity-regulating kinase 2
Omim ID	<a href="#">600526</a>
Gene Ontology	<a href="#">Hyperlink</a>
Gene Summary	This gene encodes a member of the Par-1 family of serine/threonine protein kinases. The protein is an important regulator of cell polarity in epithelial and neuronal cells, and also controls the stability of microtubules through phosphorylation and inactivation of several microtubule-associating proteins. The protein localizes to cell membranes. Multiple transcript variants encoding different isoforms have been found for this gene. [provided by RefSeq]
Other Designations	ELKL motif kinase 1 Ser/Thr protein kinase PAR-1B protein-serine/threonine kinase serine/threonine kinase

## Disease

- [Coronary Artery Disease](#)