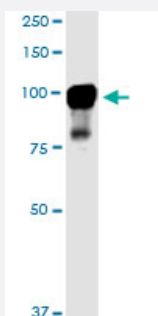


MARK2 monoclonal antibody (M01), clone 3B12

Catalog # H00002011-M01

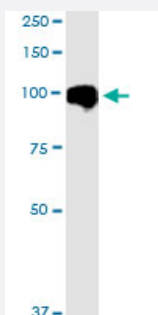
Size 100 ug

Applications



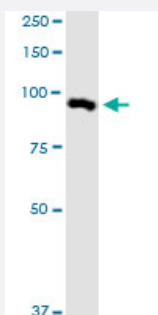
Western Blot (Cell lysate)

MARK2 monoclonal antibody (M01), clone 3B12. Western Blot analysis of MARK2 expression in PC-12.



Western Blot (Cell lysate)

MARK2 monoclonal antibody (M01), clone 3B12. Western Blot analysis of MARK2 expression in A-431.

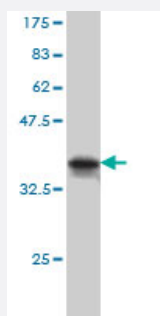
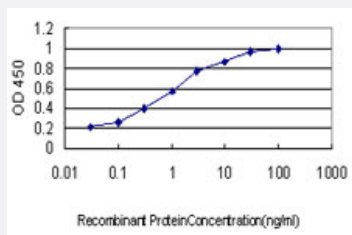


Western Blot (Cell lysate)

MARK2 monoclonal antibody (M01), clone 3B12. Western Blot analysis of MARK2 expression in NIH/3T3.

Sandwich ELISA (Recombinant protein)

Detection limit for recombinant GST tagged MARK2 is approximately 0.03ng/ml as a capture antibody.



Western Blot detection against Immunogen (36.63 KDa) .

Specification

Product Description	Mouse monoclonal antibody raised against a partial recombinant MARK2.
Immunogen	MARK2 (AAH08771, 401 a.a. ~ 500 a.a) partial recombinant protein with GST tag. MW of the GST tag alone is 26 KDa.
Sequence	QAAGPAIPTSNSYSKKTQSNNAENKRPEEDRESGRKASSTAKVPASPLPGLERKKTTPSTNS VLSTSTNRSRNSPLLERASLGQASIQNGKDSLTPG
Host	Mouse
Reactivity	Human, Mouse, Rat
Interspecies Antigen Sequence	Mouse (93); Rat (94)
Isotype	IgG2a Kappa
Quality Control Testing	Antibody Reactive Against Recombinant Protein. Western Blot detection against Immunogen (36.63 KDa) .
Storage Buffer	In 1x PBS, pH 7.4
Storage Instruction	Store at -20°C or lower. Aliquot to avoid repeated freezing and thawing.

Applications

- Western Blot (Cell lysate)

MARK2 monoclonal antibody (M01), clone 3B12. Western Blot analysis of MARK2 expression in PC-12.

[Protocol Download](#)

- Western Blot (Cell lysate)

MARK2 monoclonal antibody (M01), clone 3B12. Western Blot analysis of MARK2 expression in A-431.

[Protocol Download](#)

- Western Blot (Cell lysate)

MARK2 monoclonal antibody (M01), clone 3B12. Western Blot analysis of MARK2 expression in NIH/3T3.

[Protocol Download](#)

- Western Blot (Recombinant protein)

[Protocol Download](#)

- Sandwich ELISA (Recombinant protein)

Detection limit for recombinant GST tagged MARK2 is approximately 0.03ng/ml as a capture antibody.

[Protocol Download](#)

- ELISA

Gene Info — MARK2

Entrez GeneID	2011
---------------	----------------------

GeneBank Accession#	BC008771
---------------------	--------------------------

Protein Accession#	AAH08771
--------------------	--------------------------

Gene Name	MARK2
-----------	-------

Gene Alias	EMK1, MGC99619, PAR-1, Par1b
------------	------------------------------

Gene Description	MAP/microtubule affinity-regulating kinase 2
------------------	--

Omim ID	600526
---------	------------------------

Gene Ontology

[Hyperlink](#)

Gene Summary

This gene encodes a member of the Par-1 family of serine/threonine protein kinases. The protein is an important regulator of cell polarity in epithelial and neuronal cells, and also controls the stability of microtubules through phosphorylation and inactivation of several microtubule-associated proteins. The protein localizes to cell membranes. Multiple transcript variants encoding different isoforms have been found for this gene. [provided by RefSeq]

Other Designations

ELKL motif kinase 1|Ser/Thr protein kinase PAR-1B|protein-serine/threonine kinase|serine/threonine kinase

Publication Reference

- [Pancreatic LKB1 deletion leads to acinar polarity defects and cystic neoplasms.](#)

Hezel AF, Gurumurthy S, Granot Z, Swisa A, Chu GC, Bailey G, Dor Y, Bardeesy N, Depinho RA.

Molecular and Cellular Biology 2008 Jan; 28(7):2414.

Disease

- [Coronary Artery Disease](#)