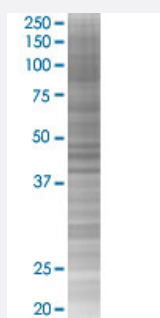


ELK4 293T Cell Transient Overexpression Lysate(Denatured)

Catalog # H00002005-T03

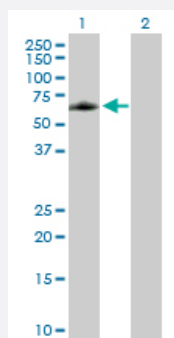
Size 100 uL

Applications



SDS-PAGE Gel

ELK4 transfected lysate.



Western Blot

Lane 1: ELK4 transfected lysate (44.70 KDa)

Lane 2: Non-transfected lysate.

Specification

Transfected Cell Line 293T

Plasmid pCMV-ELK4 full-length

Host Human

Theoretical MW (kDa) 44.7

Quality Control Testing Transient overexpression cell lysate was tested with Anti-ELK4 antibody ([H00002005-B01P](#)) by Western Blots.
 SDS-PAGE Gel
 ELK4 transfected lysate.
 Western Blot
 Lane 1: ELK4 transfected lysate (44.70 KDa)
 Lane 2: Non-transfected lysate.

Storage Buffer	1X Sample Buffer (50 mM Tris-HCl, 2% SDS, 10% glycerol, 300 mM 2-mercaptoethanol, 0.01% Bromophenol blue)
Storage Instruction	Store at -80°C. Aliquot to avoid repeated freezing and thawing.

Applications

- Western Blot

Gene Info — ELK4

Entrez GeneID	2005
GeneBank Accession#	NM_021795.2
Protein Accession#	NP_068567.1
Gene Name	ELK4
Gene Alias	SAP1
Gene Description	ELK4, ETS-domain protein (SRF accessory protein 1)
Omim ID	600246
Gene Ontology	Hyperlink
Gene Summary	This gene is a member of the Ets family of transcription factors and of the ternary complex factor (TCF) subfamily. Proteins of the TCF subfamily form a ternary complex by binding to the the serum response factor and the serum response element in the promoter of the c-fos proto-oncogene. The protein encoded by this gene is phosphorylated by the kinases, MAPK1 and MAPK8. Several transcript variants have been described for this gene. [provided by RefSeq]
Other Designations	ELK4 protein ETS-domain protein OTTHUMP00000035339 SRF accessory protein 1

Pathway

- [MAPK signaling pathway](#)