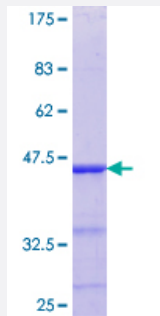


ELK4 (Human) Recombinant Protein (Q01)

Catalog # H00002005-Q01

Size 25 ug, 10 ug

Applications



Specification

Product Description	Human ELK4 partial ORF (NP_001964.2, 118 a.a. - 206 a.a.) recombinant protein with GST-tag at N-terminal.
Sequence	KDVENGKDKPPQPGAKTSSRNDYHSGLYSSFTLNSLNSSNVKLFKLIK TENPAEKLAEEKSPQ EPTPSVIKFVTTTPSKPPVEPVAA
Host	Wheat Germ (in vitro)
Theoretical MW (kDa)	35.53
Preparation Method	in vitro wheat germ expression system
Purification	Glutathione Sepharose 4 Fast Flow
Quality Control Testing	12.5% SDS-PAGE Stained with Coomassie Blue.
Storage Buffer	50 mM Tris-HCl, 10 mM reduced Glutathione, pH=8.0 in the elution buffer.
Storage Instruction	Store at -80°C. Aliquot to avoid repeated freezing and thawing.
Note	Best use within three months from the date of receipt of this protein.

Applications

- Enzyme-linked Immunoabsorbent Assay
- Western Blot (Recombinant protein)
- Antibody Production
- Protein Array

Gene Info — ELK4

Entrez GeneID [2005](#)

GeneBank Accession# [NM_001973](#)

Protein Accession# [NP_001964.2](#)

Gene Name ELK4

Gene Alias SAP1

Gene Description ELK4, ETS-domain protein (SRF accessory protein 1)

Omim ID [600246](#)

Gene Ontology [Hyperlink](#)

Gene Summary This gene is a member of the Ets family of transcription factors and of the ternary complex factor (TCF) subfamily. Proteins of the TCF subfamily form a ternary complex by binding to the the serum response factor and the serum reponse element in the promoter of the c-fos proto-oncogene. The protein encoded by this gene is phosphorylated by the kinases, MAPK1 and MAPK8. Several transcript variants have been described for this gene. [provided by RefSeq]

Other Designations ELK4 protein|ETS-domain protein|OTTHUMP00000035339|SRF accessory protein 1

Pathway

- [MAPK signaling pathway](#)