

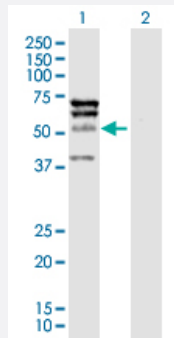
MaxPab®

ELK4 purified MaxPab rabbit polyclonal antibody (D01P)

Catalog # H00002005-D01P

Size 100 ug

Applications



Western Blot (Transfected lysate)

Western Blot analysis of ELK4 expression in transfected 293T cell line ([H00002005-T03](#)) by ELK4 MaxPab polyclonal antibody.

Lane 1: ELK4 transfected lysate(44.70 KDa).

Lane 2: Non-transfected lysate.

Specification

Product Description

Rabbit polyclonal antibody raised against a full-length human ELK4 protein.

Immunogen

ELK4 (NP_068567.1, 1 a.a. ~ 405 a.a) full-length human protein.

Sequence

MDSAITLWQFLLQLLQKPQNKHMCWTSNDGQFKLLQAEEVARLWGIRKNKPNMNYDKLSRALRY
YYVKNIKKVNGQKFVYKFVSYPEILNMDPMTVGRIEGDCESLNFSEVSSSSKDVENGKDKPPQ
PGAKTSSRNDYHSGLYSSFTLNSLNSSNVKLFKLIK TENPAEKLAEEKSPQEPTPSVIKFVTTPSK
KPPVEPVAATISIGPSISPSSEETIQALETLVSPKLPSLEAPTSASNVMTAFATTPPISSIPPLQEPPR
TPSPPLSSHPIIDTIDSVASQPMELPENLSLEPKDQDSVLEKDKVNNSSRSKKPKGLELAPTL
VITSSDPSPLGILSPSLPTASLTPAFFSQVACSLFMVSPLLSFICPFKQIQNLTYQVCFLLLRFLER
LCVTVM

Host

Rabbit

Reactivity

Human

Quality Control Testing

Antibody reactive against mammalian transfected lysate.

Storage Buffer

In 1x PBS, pH 7.4

Storage Instruction

Store at -20°C or lower. Aliquot to avoid repeated freezing and thawing.

Applications

- Western Blot (Transfected lysate)

Western Blot analysis of ELK4 expression in transfected 293T cell line ([H00002005-T03](#)) by ELK4 MaxPab polyclonal antibody.

Lane 1: ELK4 transfected lysate(44.70 KDa).

Lane 2: Non-transfected lysate.

[Protocol Download](#)

Gene Info — ELK4

Entrez GeneID [2005](#)

GeneBank Accession# [NM_021795.2](#)

Protein Accession# [NP_068567.1](#)

Gene Name ELK4

Gene Alias SAP1

Gene Description ELK4, ETS-domain protein (SRF accessory protein 1)

Omim ID [600246](#)

Gene Ontology [Hyperlink](#)

Gene Summary This gene is a member of the Ets family of transcription factors and of the ternary complex factor (TCF) subfamily. Proteins of the TCF subfamily form a ternary complex by binding to the the serum response factor and the serum reponse element in the promoter of the c-fos proto-oncogene. The protein encoded by this gene is phosphorylated by the kinases, MAPK1 and MAPK8. Several transcript variants have been described for this gene. [provided by RefSeq]

Other Designations ELK4 protein|ETS-domain protein|OTTHUMP00000035339|SRF accessory protein 1

Pathway

- [MAPK signaling pathway](#)