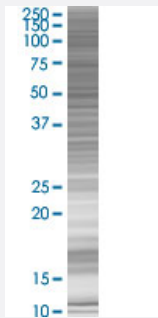


ELK3 293T Cell Transient Overexpression Lysate(Denatured)

Catalog # H00002004-T01

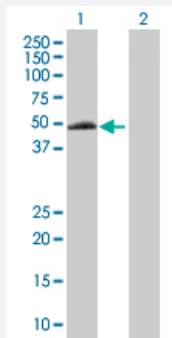
Size 100 uL

Applications



SDS-PAGE Gel

ELK3 transfected lysate.



Western Blot

Lane 1: ELK3 transfected lysate (44.88 KDa)

Lane 2: Non-transfected lysate.

Specification

Transfected Cell Line 293T

Plasmid pCMV-ELK3 full-length

Host Human

Theoretical MW (kDa) 44.88

Quality Control Testing Transient overexpression cell lysate was tested with Anti-ELK3 antibody ([H00002004-B01](#)) by Western Blots.
 SDS-PAGE Gel
 ELK3 transfected lysate.
 Western Blot
 Lane 1: ELK3 transfected lysate (44.88 KDa)
 Lane 2: Non-transfected lysate.

Storage Buffer

1X Sample Buffer (50 mM Tris-HCl, 2% SDS, 10% glycerol, 300 mM 2-mercaptoethanol, 0.01% Bromophenol blue)

Storage Instruction

Store at -80°C. Aliquot to avoid repeated freezing and thawing.

Applications

- Western Blot

Gene Info — ELK3

Entrez GeneID[2004](#)**GeneBank Accession#**[NM_005230.2](#)**Protein Accession#**[-](#)**Gene Name**

ELK3

Gene Alias

ERP, NET, SAP2

Gene Description

ELK3, ETS-domain protein (SRF accessory protein 2)

Omim ID[600247](#)**Gene Ontology**[Hyperlink](#)**Gene Summary**

The protein encoded by this gene is a member of the ETS-domain transcription factor family and the ternary complex factor (TCF) subfamily. Proteins in this subfamily regulate transcription when recruited by serum response factor to bind to serum response elements. This protein is activated by signal-induced phosphorylation; studies in rodents suggest that it is a transcriptional inhibitor in the absence of Ras, but activates transcription when Ras is present. [provided by RefSeq]

Other Designations

ELK3 protein|ETS-domain protein|SRF accessory protein 2

Disease

- [Tobacco Use Disorder](#)