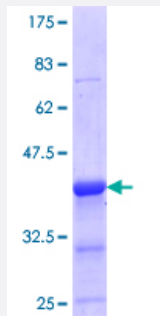


# ELK3 (Human) Recombinant Protein (Q01)

Catalog # H00002004-Q01

Size 25 ug, 10 ug

## Applications



## Specification

<b>Product Description</b>	Human ELK3 partial ORF ( NP_005221.2, 101 a.a. - 200 a.a.) recombinant protein with GST-tag at N-terminal.
<b>Sequence</b>	SRESLLLQSDCKASPEGREAHKHGLAALRSTSRNEYIHSGLYSSFTINSLQNPPDAFKAIKTEKL EPPEDSPPVEEVRTVIRFVTNKTDKHAVTRPVVS
<b>Host</b>	Wheat Germ (in vitro)
<b>Theoretical MW (kDa)</b>	36.74
<b>Preparation Method</b>	<a href="#">in vitro wheat germ expression system</a>
<b>Purification</b>	Glutathione Sepharose 4 Fast Flow
<b>Quality Control Testing</b>	12.5% SDS-PAGE Stained with Coomassie Blue.
<b>Storage Buffer</b>	50 mM Tris-HCl, 10 mM reduced Glutathione, pH=8.0 in the elution buffer.
<b>Storage Instruction</b>	Store at -80°C. Aliquot to avoid repeated freezing and thawing.
<b>Note</b>	Best use within three months from the date of receipt of this protein.

## Applications

- Enzyme-linked Immunoabsorbent Assay
- Western Blot (Recombinant protein)
- Antibody Production
- Protein Array

## Gene Info — ELK3

**Entrez GeneID** [2004](#)

**GeneBank Accession#** [NM\\_005230](#)

**Protein Accession#** [NP\\_005221.2](#)

**Gene Name** ELK3

**Gene Alias** ERP, NET, SAP2

**Gene Description** ELK3, ETS-domain protein (SRF accessory protein 2)

**Omim ID** [600247](#)

**Gene Ontology** [Hyperlink](#)

**Gene Summary** The protein encoded by this gene is a member of the ETS-domain transcription factor family and the ternary complex factor (TCF) subfamily. Proteins in this subfamily regulate transcription when recruited by serum response factor to bind to serum response elements. This protein is activated by signal-induced phosphorylation; studies in rodents suggest that it is a transcriptional inhibitor in the absence of Ras, but activates transcription when Ras is present. [provided by RefSeq]

**Other Designations** ELK3 protein|ETS-domain protein|SRF accessory protein 2

## Disease

- [Tobacco Use Disorder](#)