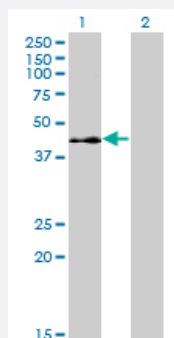


ELK3 monoclonal antibody (M02), clone 3A12

Catalog # H00002004-M02

Size 100 ug

Applications

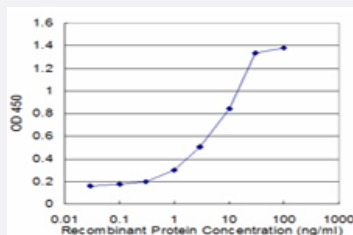


Western Blot (Transfected lysate)

Western Blot analysis of ELK3 expression in transfected 293T cell line by ELK3 monoclonal antibody (M02), clone 3A12.

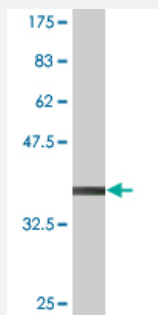
Lane 1: ELK3 transfected lysate (44.2 KDa).

Lane 2: Non-transfected lysate.



Sandwich ELISA (Recombinant protein)

Detection limit for recombinant GST tagged ELK3 is approximately 0.3ng/ml as a capture antibody.



Western Blot detection against Immunogen (36.74 KDa) .

Specification

Product Description

Mouse monoclonal antibody raised against a partial recombinant ELK3.

Immunogen	ELK3 (NP_005221.2, 101 a.a. ~ 200 a.a) partial recombinant protein with GST tag. MW of the GST tag alone is 26 KDa.
Sequence	SRESLLLQDSDCKASPEGREAHKHGLAALRSTSRNEYIHSGLYSSFTINSLQNPPDAFKAIKTEKLEPPEDSPPVEEVRTVIRFVTNKTDKHAVTRPVVS
Host	Mouse
Reactivity	Human
Isotype	IgG2a Kappa
Quality Control Testing	Antibody Reactive Against Recombinant Protein. Western Blot detection against Immunogen (36.74 KDa) .
Storage Buffer	In 1x PBS, pH 7.4
Storage Instruction	Store at -20°C or lower. Aliquot to avoid repeated freezing and thawing.

Applications

- Western Blot (Transfected lysate)

Western Blot analysis of ELK3 expression in transfected 293T cell line by ELK3 monoclonal antibody (M02), clone 3A12.

Lane 1: ELK3 transfected lysate(44.2 KDa).

Lane 2: Non-transfected lysate.

[Protocol Download](#)

- Western Blot (Recombinant protein)

[Protocol Download](#)

- Sandwich ELISA (Recombinant protein)

Detection limit for recombinant GST tagged ELK3 is approximately 0.3ng/ml as a capture antibody.

[Protocol Download](#)

- ELISA

Gene Info — ELK3

Entrez GeneID [2004](#)

GeneBank Accession# [NM_005230](#)

Protein Accession#	NP_005221.2
Gene Name	ELK3
Gene Alias	ERP, NET, SAP2
Gene Description	ELK3, ETS-domain protein (SRF accessory protein 2)
Omim ID	600247
Gene Ontology	Hyperlink
Gene Summary	<p>The protein encoded by this gene is a member of the ETS-domain transcription factor family and the ternary complex factor (TCF) subfamily. Proteins in this subfamily regulate transcription when recruited by serum response factor to bind to serum response elements. This protein is activated by signal-induced phosphorylation; studies in rodents suggest that it is a transcriptional inhibitor in the absence of Ras, but activates transcription when Ras is present. [provided by RefSeq]</p>
Other Designations	ELK3 protein ETS-domain protein SRF accessory protein 2

Disease

- [Tobacco Use Disorder](#)