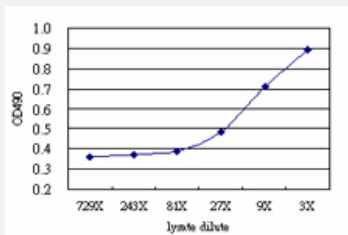


# ELK3 (Human) Matched Antibody Pair

Catalog # H00002004-AP51

Size 1 Set

## Applications



Sandwich ELISA detection sensitivity ranging from approximately 27x to 3x dilution of the ELK3 293T overexpression lysate (non-denatured).

## Specification

<b>Product Description</b>	This antibody pair set comes with a matched antibody pair to detect and quantify the protein level of human ELK3.
<b>Reactivity</b>	Human
<b>Quality Control Testing</b>	Standard curve using ELK3 293T overexpression lysate (non-denatured) as an analyte. Sandwich ELISA detection sensitivity ranging from approximately 27x to 3x dilution of the ELK3 293 T overexpression lysate (non-denatured).
<b>Supplied Product</b>	Antibody pair set content: 1. Capture antibody: mouse monoclonal anti-ELK3 (100 ug) 2. Detection antibody: rabbit purified polyclonal anti-ELK3 (50 ug) *Reagents are sufficient for at least 3-5 x 96 well plates using recommended protocols.
<b>Storage Instruction</b>	Store reagents of the antibody pair set at -20°C or lower. Please aliquot to avoid repeated freeze thaw cycle. Reagents should be returned to -20°C storage immediately after use.

## Applications

- ELISA Pair (Transfected lysate)

[Protocol Download](#)

## Gene Info — ELK3

Entrez GeneID	<a href="#">2004</a>
Gene Name	ELK3
Gene Alias	ERP, NET, SAP2
Gene Description	ELK3, ETS-domain protein (SRF accessory protein 2)
Omim ID	<a href="#">600247</a>
Gene Ontology	<a href="#">Hyperlink</a>
Gene Summary	<p>The protein encoded by this gene is a member of the ETS-domain transcription factor family and the ternary complex factor (TCF) subfamily. Proteins in this subfamily regulate transcription when recruited by serum response factor to bind to serum response elements. This protein is activated by signal-induced phosphorylation; studies in rodents suggest that it is a transcriptional inhibitor in the absence of Ras, but activates transcription when Ras is present. [provided by RefSeq]</p>
Other Designations	ELK3 protein ETS-domain protein SRF accessory protein 2

## Disease

- [Tobacco Use Disorder](#)