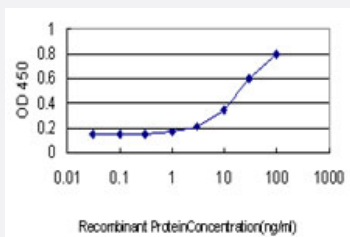


ELK1 monoclonal antibody (M01), clone 2G6

Catalog # H00002002-M01

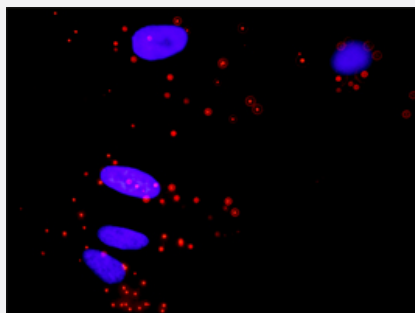
Size 100 ug

Applications



Sandwich ELISA (Recombinant protein)

Detection limit for recombinant GST tagged ELK1 is approximately 1ng/ml as a capture antibody.



In situ Proximity Ligation Assay (Cell)

Proximity Ligation Analysis of protein-protein interactions between MAPK3 and ELK1. HeLa cells were stained with anti-MAPK3 rabbit purified polyclonal 1:1200 and anti-ELK1 mouse monoclonal antibody 1:50. Each red dot represents the detection of protein-protein interaction complex, and nuclei were counterstained with DAPI (blue).

Specification

Product Description

Mouse monoclonal antibody raised against a partial recombinant ELK1.

Immunogen

ELK1 (NP_005220, 67 a.a. ~ 166 a.a) partial recombinant protein with GST tag. MW of the GST tag alone is 26 KDa.

Sequence

YYDKNIIRKVSQGQKFVYKFVSYPEVAGCSTEDCPPQPEVSVTSTMPNVAPAAIHAAPGDTVSGKP
GTPKGAGMAGPGGLARSSRNEYMRSGLYSTFTIQS

Host

Mouse

Reactivity

Human

Interspecies Antigen Sequence	Mouse (88); Rat (86)
Isotype	IgG2a Kappa
Quality Control Testing	Antibody Reactive Against Recombinant Protein.
Storage Buffer	In 1x PBS, pH 7.4
Storage Instruction	Store at -20°C or lower. Aliquot to avoid repeated freezing and thawing.

Applications

- Sandwich ELISA (Recombinant protein)

Detection limit for recombinant GST tagged ELK1 is approximately 1ng/ml as a capture antibody.

[Protocol Download](#)

- ELISA

- *In situ* Proximity Ligation Assay (Cell)

Proximity Ligation Analysis of protein-protein interactions between MAPK3 and ELK1. HeLa cells were stained with anti-MAPK3 rabbit purified polyclonal 1:1200 and anti-ELK1 mouse monoclonal antibody 1:50. Each red dot represents the detection of protein-protein interaction complex, and nuclei were counterstained with DAPI (blue).

Gene Info — ELK1

Entrez GeneID	2002
GeneBank Accession#	NM_005229
Protein Accession#	NP_005220
Gene Name	ELK1
Gene Alias	-
Gene Description	ELK1, member of ETS oncogene family
Omim ID	311040
Gene Ontology	Hyperlink

Gene Summary

This gene is a member of the Ets family of transcription factors and of the ternary complex factor (TCF) subfamily. Proteins of the TCF subfamily form a ternary complex by binding to the the serum response factor and the serum reponse element in the promoter of the c-fos proto-oncogene. The protein encoded by this gene is a nuclear target for the ras-raf-MAPK signaling cascade. Alternatively spliced transcript variants encoding the same protein have been found for this gene. [provided by RefSeq]

Other Designations

ELK1 protein|OTTHUMP00000023224|OTTHUMP00000023225

Pathway

- [Endometrial cancer](#)
- [ErbB signaling pathway](#)
- [Focal adhesion](#)
- [GnRH signaling pathway](#)
- [Insulin signaling pathway](#)
- [MAPK signaling pathway](#)
- [Prion diseases](#)

Disease

- [Cardiovascular Diseases](#)
- [Diabetes Mellitus](#)
- [Edema](#)