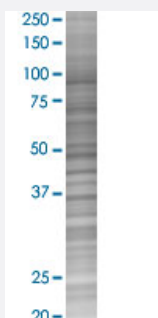


ELAVL3 293T Cell Transient Overexpression Lysate(Denatured)

Catalog # H00001995-T03

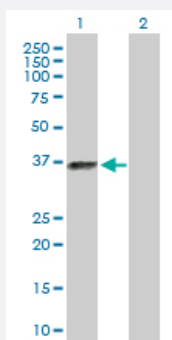
Size 100 uL

Applications



SDS-PAGE Gel

ELAVL3 transfected lysate.



Western Blot

Lane 1: ELAVL3 transfected lysate (39.50 KDa)

Lane 2: Non-transfected lysate.

Specification

Transfected Cell Line 293T

Plasmid pCMV-ELAVL3 full-length

Host Human

Theoretical MW (kDa) 39.5

Quality Control Testing Transient overexpression cell lysate was tested with Anti-ELAVL3 antibody ([H00001995-D01P](#)) by Western Blots.
 SDS-PAGE Gel
 ELAVL3 transfected lysate.
 Western Blot
 Lane 1: ELAVL3 transfected lysate (39.50 KDa)
 Lane 2: Non-transfected lysate.

Storage Buffer

1X Sample Buffer (50 mM Tris-HCl, 2% SDS, 10% glycerol, 300 mM 2-mercaptoethanol, 0.01% Bromophenol blue)

Storage Instruction

Store at -80°C. Aliquot to avoid repeated freezing and thawing.

Applications

- Western Blot

Gene Info — ELAVL3

Entrez GeneID[1995](#)**GeneBank Accession#**[NM_001420](#)**Protein Accession#**[NP_001411.2](#)**Gene Name**

ELAVL3

Gene Alias

DKFZp547J036, HUC, HUCL, MGC20653, PLE21

Gene Description

ELAV (embryonic lethal, abnormal vision, Drosophila)-like 3 (Hu antigen C)

Omim ID[603458](#)**Gene Ontology**[Hyperlink](#)**Gene Summary**

A member of the ELAVL protein family, ELAV-like 3 is a neural-specific RNA-binding protein which contains three RNP-type RNA recognition motifs. The observation that ELAVL3 is one of several Hu antigens (neuronal-specific RNA-binding proteins) recognized by the anti-Hu serum antibody present in sera from patients with paraneoplastic encephalomyelitis and sensory neuronopathy (PEM/PSN) suggests it has a role in neurogenesis. Two alternatively spliced transcript variants encoding distinct isoforms have been found for this gene. [provided by RefSeq]

Other Designations

ELAV-like protein 3|Hu antigen C|paraneoplastic cerebellar degeneration-associated antigen|paraneoplastic limbic encephalitis antigen 21