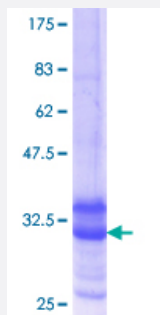


ELAVL3 (Human) Recombinant Protein (Q01)

Catalog # H00001995-Q01

Size 25 ug, 10 ug

Applications



Specification

Product Description	Human ELAVL3 partial ORF (NP_001411.2, 177 a.a. - 265 a.a.) recombinant protein with GST-tag at N-terminal.
Sequence	IEAEEAIKGLNGQKPLGAAEPITVKFANNPSQKTGQALLTHLYQSSARRYAGPLHHQTQRFRLDNL LN MAYGVKSPLSLIARFSPIAID
Host	Wheat Germ (in vitro)
Theoretical MW (kDa)	35.53
Preparation Method	in vitro wheat germ expression system
Purification	Glutathione Sepharose 4 Fast Flow
Quality Control Testing	12.5% SDS-PAGE Stained with Coomassie Blue.
Storage Buffer	50 mM Tris-HCl, 10 mM reduced Glutathione, pH=8.0 in the elution buffer.
Storage Instruction	Store at -80°C. Aliquot to avoid repeated freezing and thawing.
Note	Best use within three months from the date of receipt of this protein.

Applications

- Enzyme-linked Immunoabsorbent Assay
- Western Blot (Recombinant protein)
- Antibody Production
- Protein Array

Gene Info — ELAVL3

Entrez GeneID [1995](#)

GeneBank Accession# [NM_001420](#)

Protein Accession# [NP_001411.2](#)

Gene Name ELAVL3

Gene Alias DKFZp547J036, HUC, HUCL, MGC20653, PLE21

Gene Description ELAV (embryonic lethal, abnormal vision, Drosophila)-like 3 (Hu antigen C)

Omim ID [603458](#)

Gene Ontology [Hyperlink](#)

Gene Summary A member of the ELAVL protein family, ELAV-like 3 is a neural-specific RNA-binding protein which contains three RNP-type RNA recognition motifs. The observation that ELAVL3 is one of several Hu antigens (neuronal-specific RNA-binding proteins) recognized by the anti-Hu serum antibody present in sera from patients with paraneoplastic encephalomyelitis and sensory neuronopathy (PEM/PSN) suggests it has a role in neurogenesis. Two alternatively spliced transcript variants encoding distinct isoforms have been found for this gene. [provided by RefSeq]

Other Designations ELAV-like protein 3|Hu antigen C|paraneoplastic cerebellar degeneration-associated antigen|paraneoplastic limbic encephalitis antigen 21