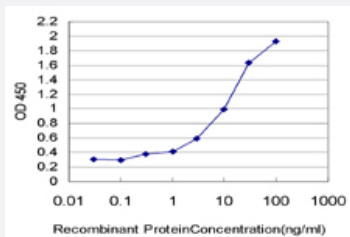


ELA2 monoclonal antibody (M07), clone 1A11

Catalog # H00001991-M07

Size 50 ug

Applications



Sandwich ELISA (Recombinant protein)

Detection limit for recombinant GST tagged ELA2 is approximately 0.3ng/ml as a capture antibody.

Specification

Product Description	Mouse monoclonal antibody raised against a partial recombinant ELA2.
Immunogen	ELA2 (NP_001963, 168 a.a. ~ 267 a.a) partial recombinant protein with GST tag. MW of the GST tag alone is 26 KDa.
Sequence	VLQELNVTVTSLCRRSNVCTLVGRGRQAGVCFGDSGSPLVCNGLIHGIAFVRGGCASGLYPDAFAPVAQFVNWIDSIIQRSEDNPCPHPRDPDPASRTH
Host	Mouse
Reactivity	Human
Isotype	IgG2a Kappa
Quality Control Testing	Antibody Reactive Against Recombinant Protein.
Storage Buffer	In 1x PBS, pH 7.4
Storage Instruction	Store at -20°C or lower. Aliquot to avoid repeated freezing and thawing.

Applications

- Sandwich ELISA (Recombinant protein)

Detection limit for recombinant GST tagged ELA2 is approximately 0.3ng/ml as a capture antibody.

[Protocol Download](#)

- ELISA

Gene Info — ELA2

Entrez GeneID [1991](#)

GeneBank Accession# [NM_001972](#)

Protein Accession# [NP_001963](#)

Gene Name ELA2

Gene Alias GE, HLE, HNE, NE, PMN-E

Gene Description elastase 2, neutrophil

Omim ID [130130 162800 202700](#)

Gene Ontology [Hyperlink](#)

Gene Summary

Elastases form a subfamily of serine proteases that hydrolyze many proteins in addition to elastin. Humans have six elastase genes which encode the structurally similar proteins. The product of this gene hydrolyzes proteins within specialized neutrophil lysosomes, called azurophil granules, as well as proteins of the extracellular matrix following the protein's release from activated neutrophils. The enzyme may play a role in degenerative and inflammatory diseases by its proteolysis of collagen-IV and elastin of the extracellular matrix. This protein degrades the outer membrane protein A (OmpA) of E. coli as well as the virulence factors of such bacteria as Shigella, Salmonella and Yersinia. Mutations in this gene are associated with cyclic neutropenia and severe congenital neutropenia (SCN). This gene is clustered with other serine protease gene family members, azurocidin 1 and proteinase 3 genes, at chromosome 19pter. All 3 genes are expressed coordinately and their protein products are packaged together into azurophil granules during neutrophil differentiation. [provided by RefSeq]

Other Designations bone marrow serine protease|granulocyte-derived elastase|leukocyte elastase|medullasin|polymorphonuclear elastase

Pathway

- [Systemic lupus erythematosus](#)

Disease

- [Chronic Disease](#)
- [Coronary Disease](#)
- [Genetic Predisposition to Disease](#)
- [Liver Cirrhosis](#)
- [Lung Neoplasms](#)
- [Myocardial Infarction](#)
- [Neutropenia](#)
- [Pulmonary Disease](#)