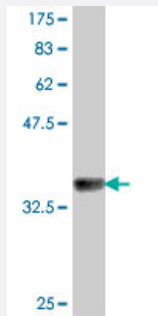


EIF4G1 polyclonal antibody (A01)

Catalog # H00001981-A01

Size 50 uL

Applications



Western Blot detection against Immunogen (37.11 KDa) .

Specification

Product Description	Mouse polyclonal antibody raised against a partial recombinant EIF4G1.
Immunogen	EIF4G1 (NP_886553, 1500 a.a. ~ 1599 a.a) partial recombinant protein with GST tag.
Sequence	DVAVLKARAKLLQKYLCDEQKELQALYALQALVVTLEQPPNLLRMFFDALYDEDVVKEDAFYSW ESSKDPAEQQGKGVALKSVTAFFKWLREAEESDHN
Host	Mouse
Reactivity	Human
Interspecies Antigen Sequence	Mouse (94); Rat (93)
Quality Control Testing	Antibody Reactive Against Recombinant Protein. Western Blot detection against Immunogen (37.11 KDa) .
Storage Buffer	50 % glycerol
Storage Instruction	Store at -20°C or lower. Aliquot to avoid repeated freezing and thawing.

Applications

- Western Blot (Recombinant protein)

[Protocol Download](#)

- ELISA

Gene Info — EIF4G1

Entrez GeneID [1981](#)

GeneBank Accession# [NM_182917](#)

Protein Accession# [NP_886553](#)

Gene Name EIF4G1

Gene Alias DKFZp686A1451, EIF4F, EIF4G, p220

Gene Description eukaryotic translation initiation factor 4 gamma, 1

Omim ID [600495](#)

Gene Ontology [Hyperlink](#)

Gene Summary The protein encoded by this gene is a component of the protein complex EIF4F, which is involved in the recognition of the mRNA cap, ATP-dependent unwinding of 5'-terminal secondary structure, and recruitment of mRNA to the ribosome. Alternative splicing results in five transcript variants encoding four distinct isoforms. [provided by RefSeq]

Other Designations EIF4-gamma

Publication Reference

- [Upregulation of eIF4E, but not other translation initiation factors, in dendritic spines during memory formation.](#)

Sofya Gindina, Benjamin Botsford, Kiriana Cowansage, Joseph LeDoux, Eric Klann, Charles Hoeffler, Linnaea Ostroff.

The Journal of Comparative Neurology 2021 Aug; 529(11):3112.

Application: EM, Rat, Rat brain